



**Alzheimer's Disease  
International**

# **Dementia: Impact on person and work place.**

International conference of IFA,  
Hyderabad 10<sup>th</sup> to 13<sup>th</sup> June 2014

**Dr. Jacob Roy Kuriakose**  
**Chairman, Alzheimer's Disease**  
**International**

# Claude Bilat 57Years



Swiss National, Married, 2 daughters, diagnosed with AD, 1 ½ years back wised to work as IT specialist. He has worked for banks, had his own company, Had to stop working after the diagnosis. Spoke at the WHA Geneva, “It is a whole different dimension if someone with the disease actively involve with the discussion”.

How right he is!



# O.P. Gopalan, 78 years



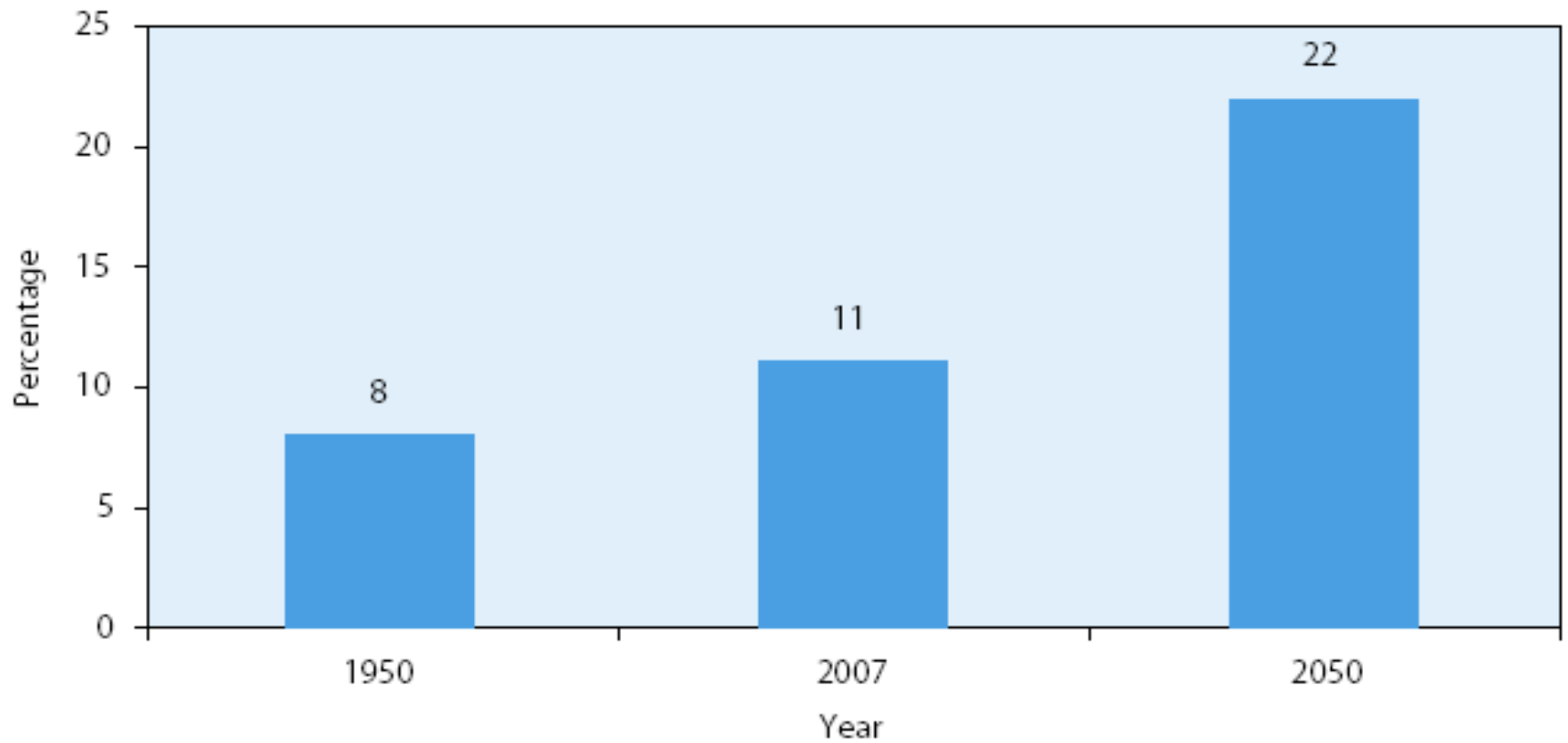
Live in Cochin, diagnosed to have AD in 2012, separated from his wife, daughter 26 years is the care giver. Works hard as designer/tailor part time student and father's carer, got her father admitted in ARDSI day care at Cochin. She was in tears when she spoke "If I am given help during the day I'll care for him at night, since my mother's care is not there. Even though he thinks I am his sister, I accept it. I know it is his disease that speaks. I am at peace now and able to enjoy my work, as I know that my dad is well taken care at the ARDSI day care.



# Global Ageing



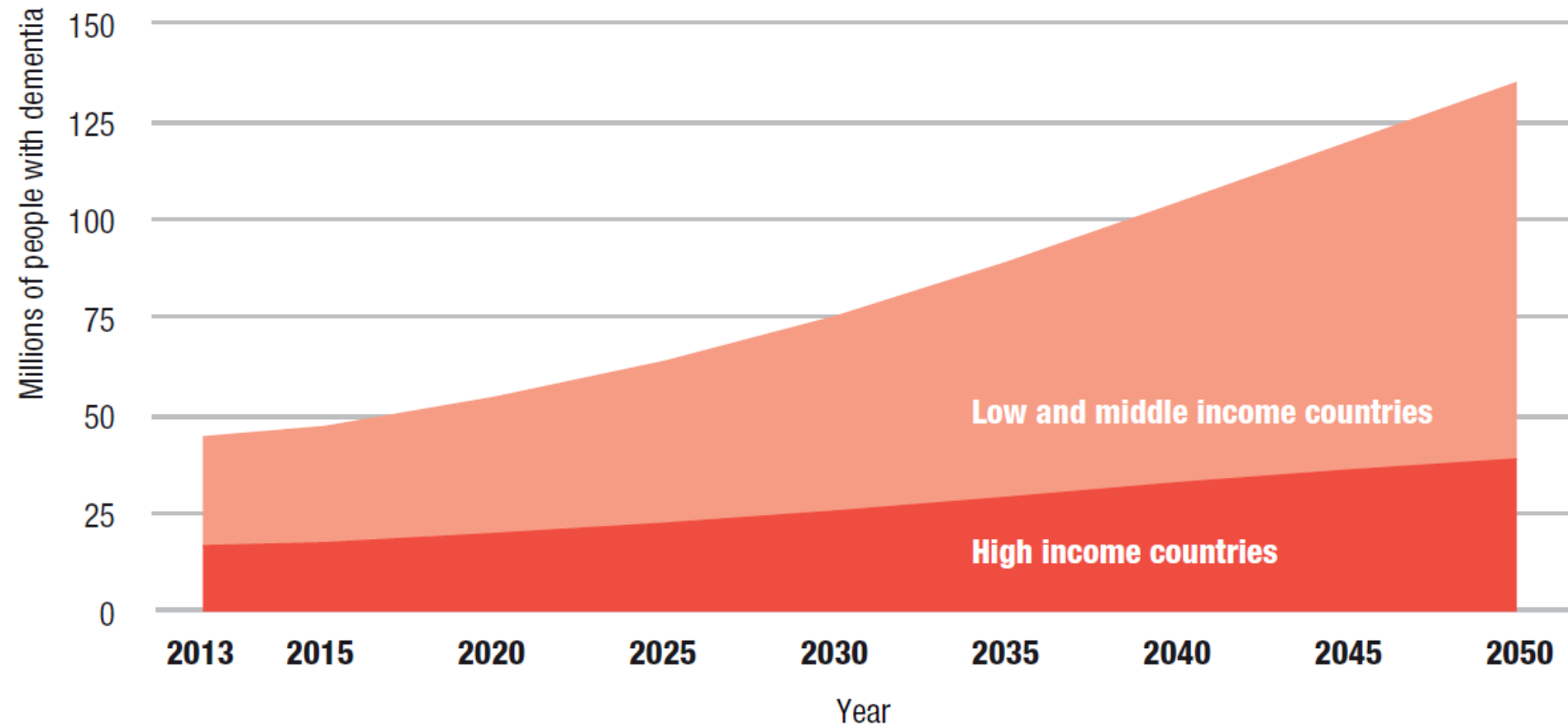
Figure I  
Proportion of population 60 years or over: world, 1950-2050



# Estimated increase in dementia worldwide



**Number of people with dementia in low and middle income countries compared to high income countries**

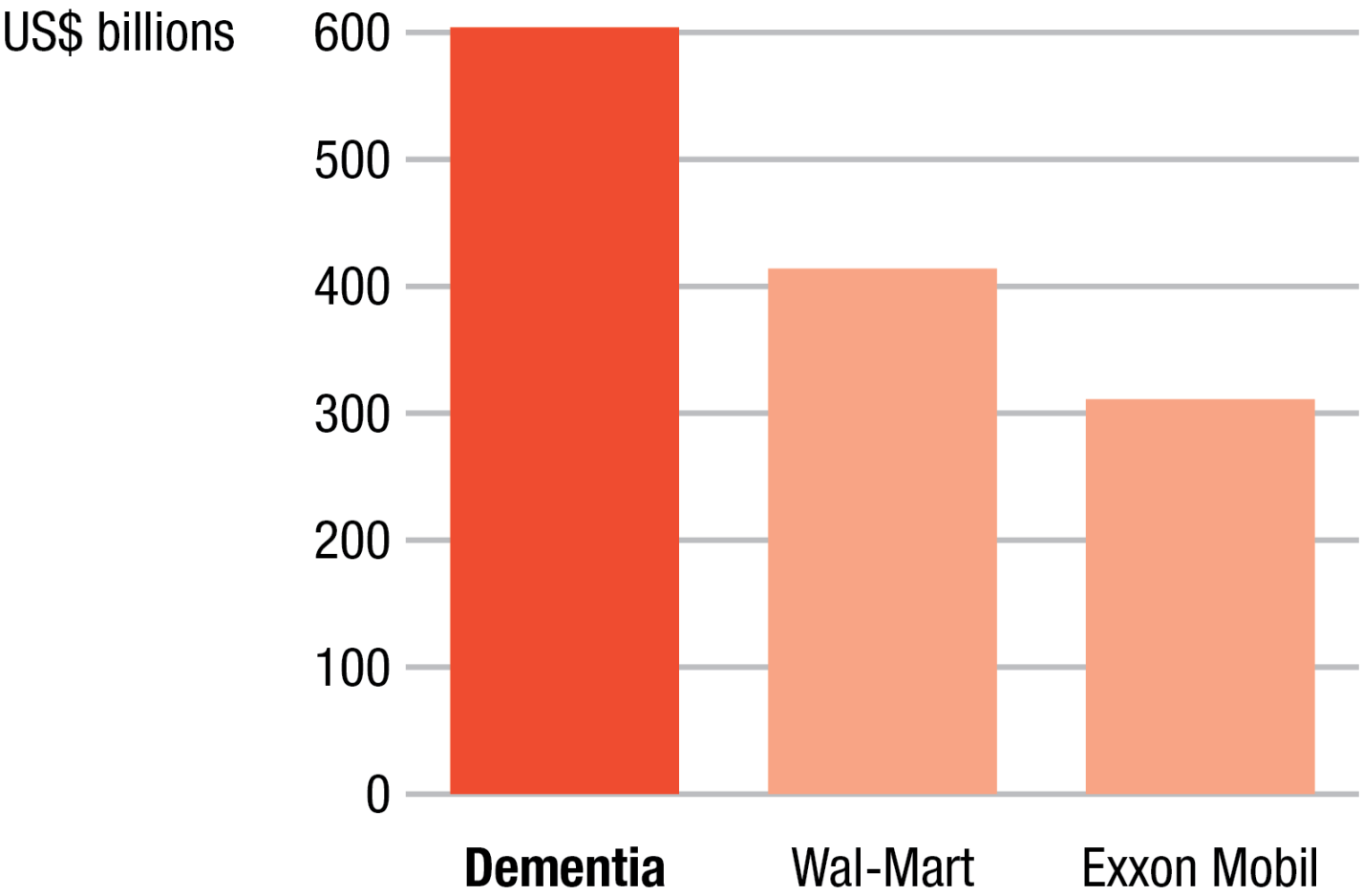


# Global Prevalence



1. 58% of all people with dementia live in low and middle income countries, rising to 71% by 2050.
2. Proportionately, growth in the next 20 years will be greater in low and medium income countries.
3. 40% in Europe.
4. 107% in East Asia.

# Cost of dementia compared to company revenue



# Dementia Situation in Asia



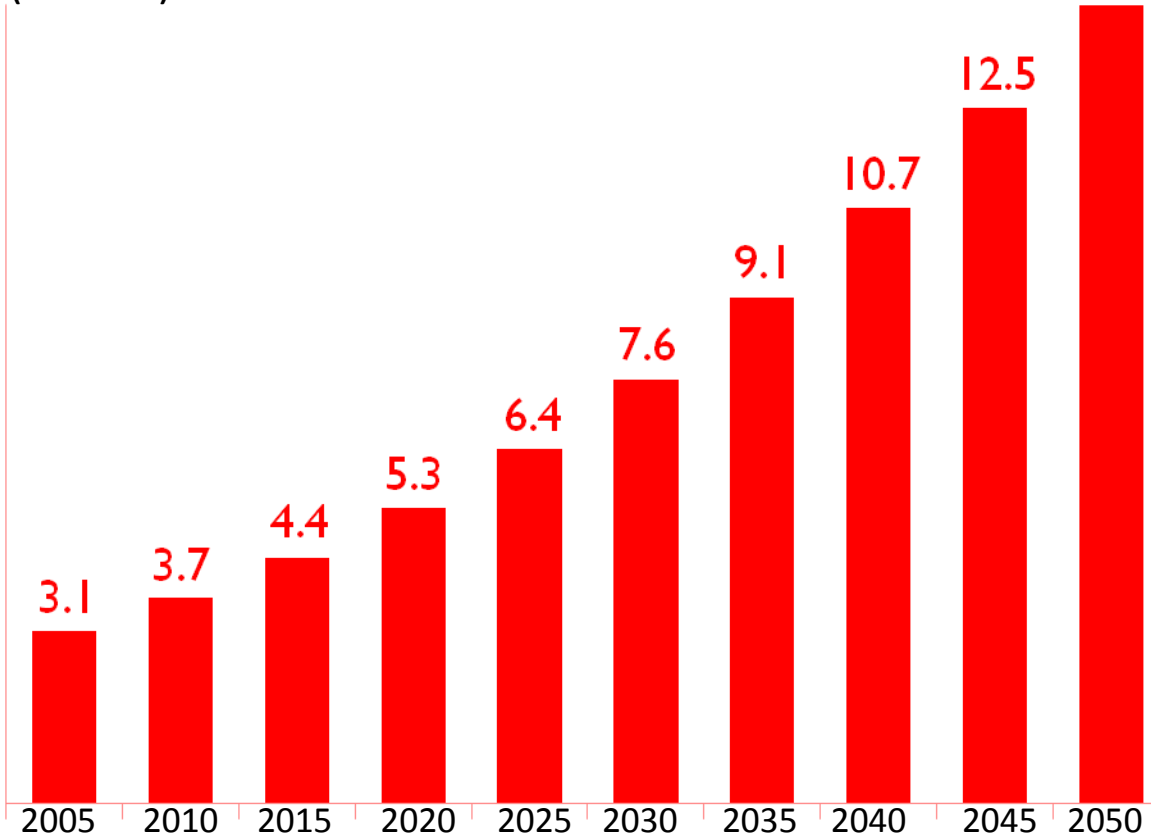
- ❖ Dementia not integrated in primary care
- ❖ Ill prepared to cope with the sharp increase in number
- ❖ Inadequate human and financial resources
- ❖ Limited or no policy on dementia care, as dementia is not a health priority
- ❖ Inadequate training for professional care givers
- ❖ Break down of traditional family system
- ❖ Most Asian countries won't have enough "specialists". Thus dementia care needs to involve CBR workers, primary care doctors and nurses



# Dementia in India: The Numbers are Daunting



Number of People with Dementia in India  
(Million)

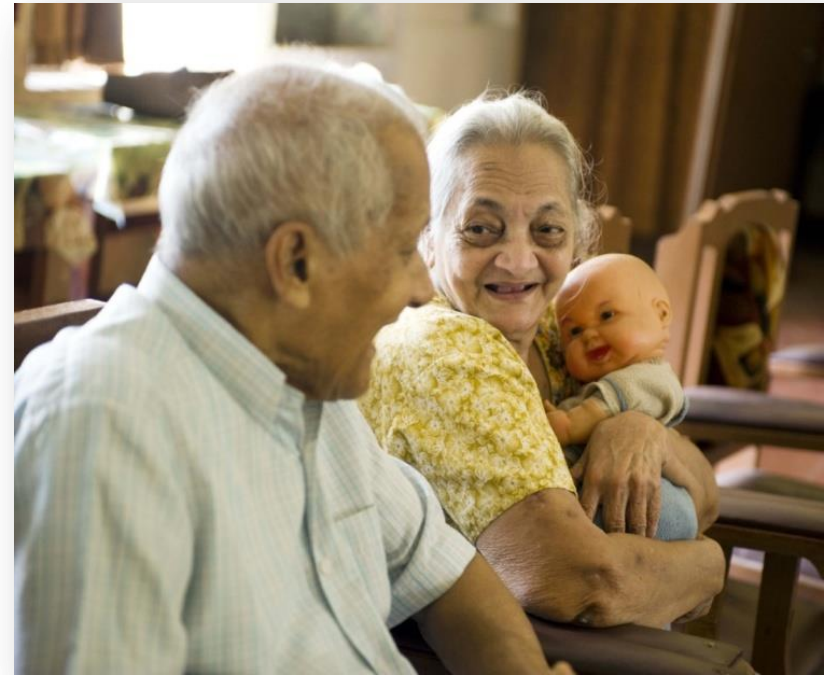


- Over 3.7 million people with dementia in 2010
- Number expected to double by 2030
- Only ~10% of cases are diagnosed

# Caregivers and work



1. Most people are cared for by family at home for most of the length of the disease
2. Caregivers report quitting or never seeking work, reducing hours, reducing responsibilities and promotions,
3. “Sandwich generation” Children and elders in care.
4. Growth in the next 20 years will be greater in low and medium income countries, a development burden





# Impact of Dementia

- Individual – experience ill health, disability, impaired quality of life, reduced life expectancy
- Family – significant burden and affects QoL
- Society – Cost of care directly or by government
- Loss of productivity
- Dementia is one of the main cause of disability in later life
- Likely to suffer from multiple health problems
- Cause disability and dependence
- Dementia has disproportionate impact on the capacity for independent living.

# Burden of Care



Care burden refers to the physical, emotional and financial toll of care giving

This includes increased rates of depression, illness and mortality.



# Family Intervention



- **Providing information about the nature ,course and prognosis**
- **Lowering of expectations**
- **Changing the perceptions**
- **Enhancing problem solving skills**
- **Support and guidance**



# The 10/66 Dementia Research Group



# Dementia in Work Place



- The signs often become noticeable in the work place
- Changes are subtle
- Co Workers cover up
- Personality changes
- Inappropriate behaviour
- Early diagnosis helps
- Young onset dementia needs specific diagnosis, treatment plan; education and support
- Help to get legal and financial support.
- How long people with AD/other forms of dementia can or should continue working?
- Driving for how long?
- Creating Dementia Friendly Communities

