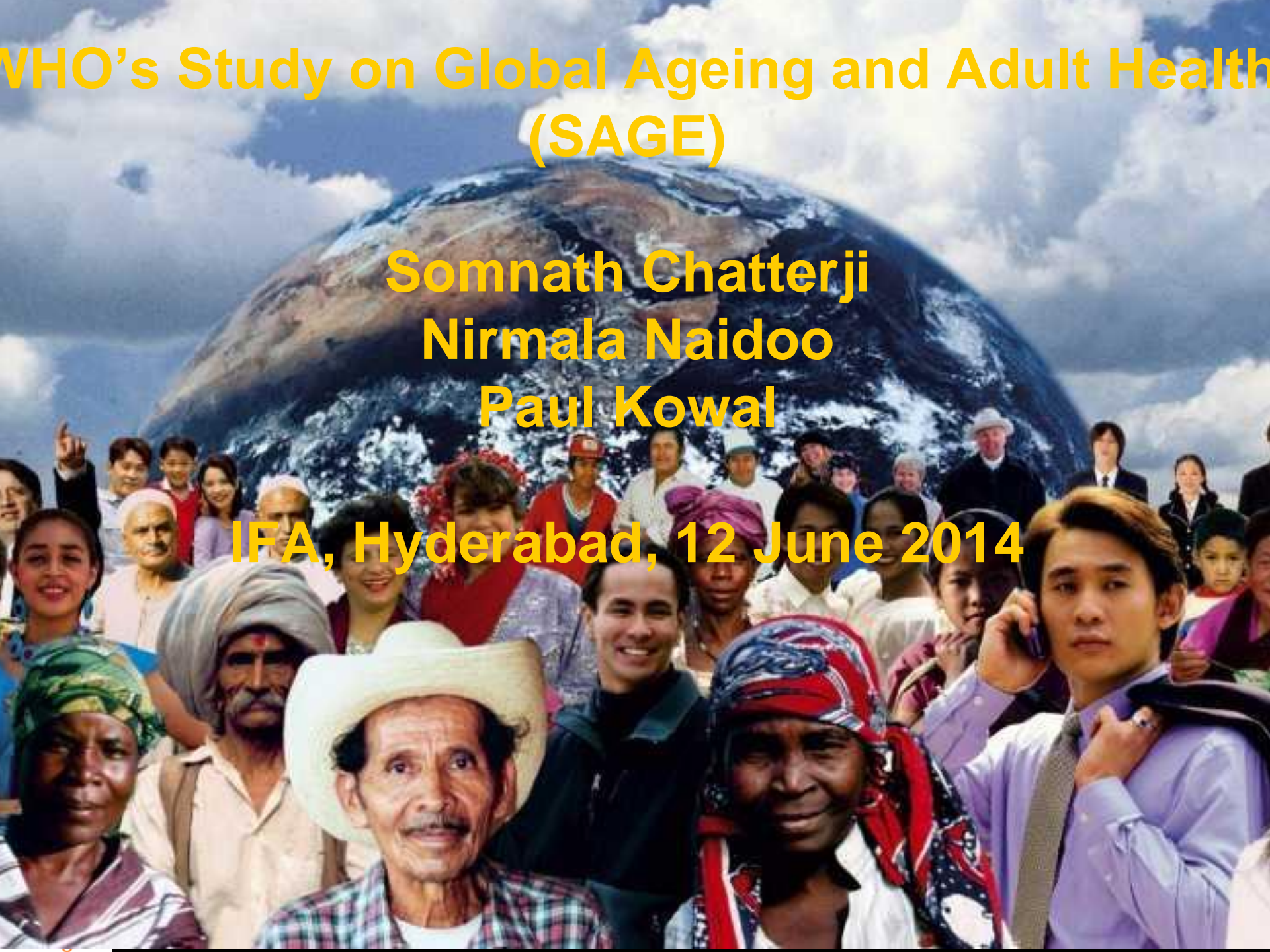


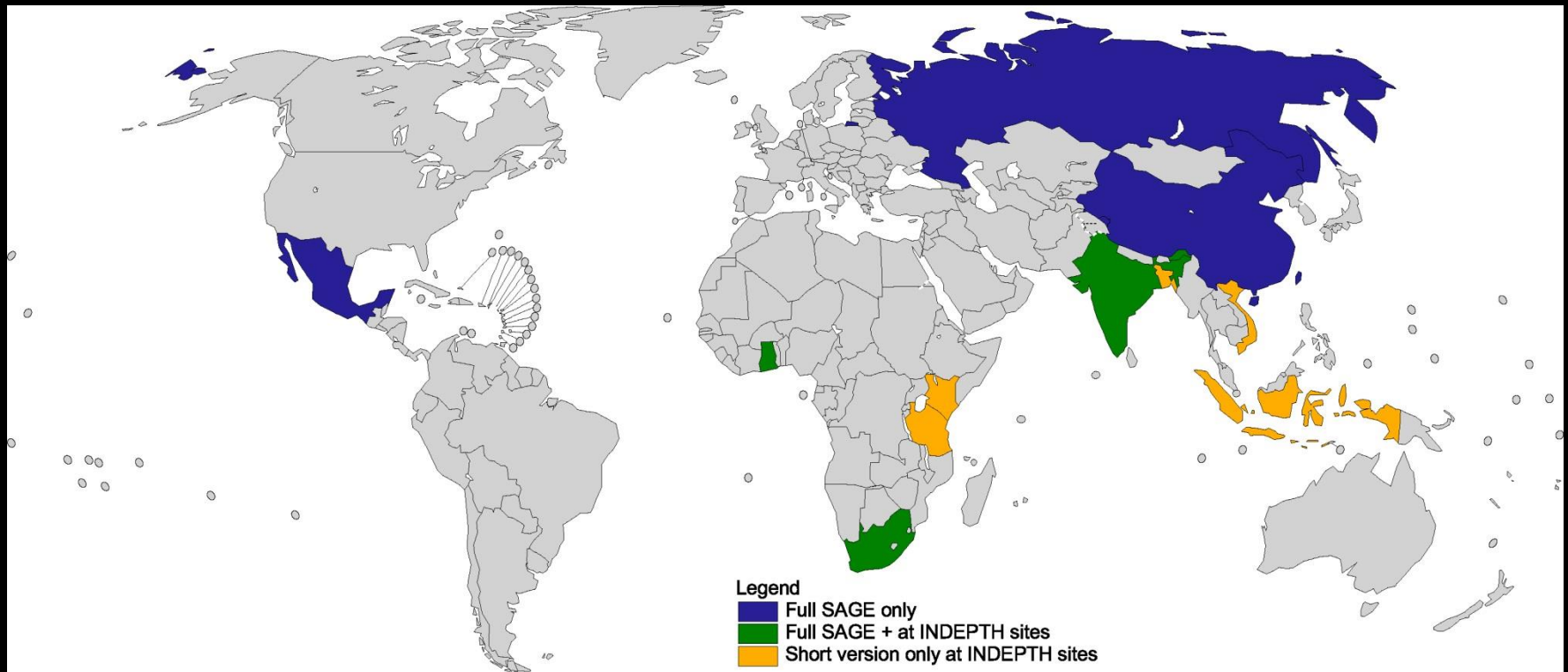
WHO's Study on Global Ageing and Adult Health (SAGE)

Somnath Chatterji
Nirmala Naidoo
Paul Kowal

IFA, Hyderabad, 12 June 2014



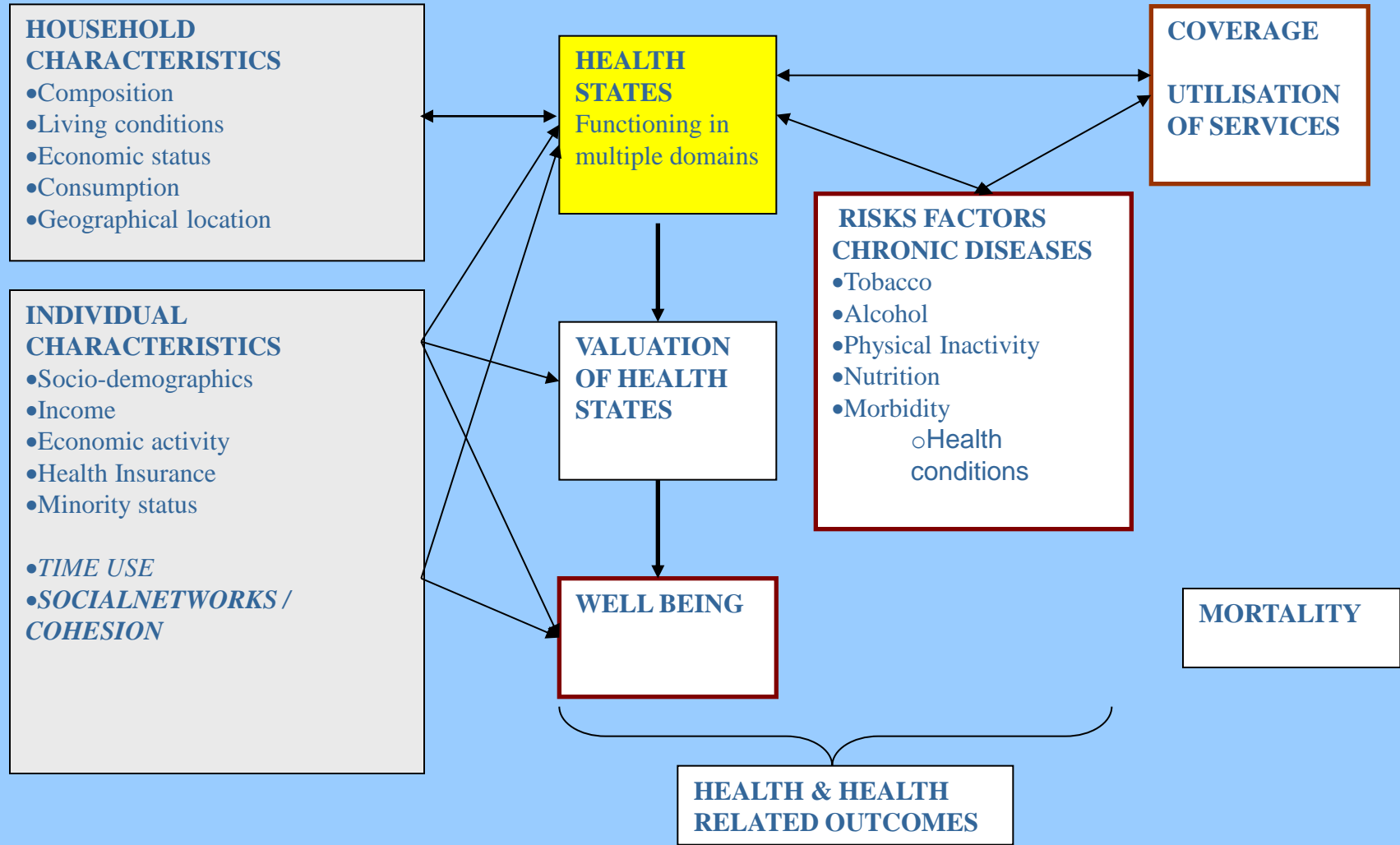
SAGE - INDEPTH



- China
- Mexico
- Kenya
- Viet Nam
- India
- South Africa
- Tanzania
- Indonesia
- Russia
- Ghana
- Bangladesh

The boundaries and names shown and the designations used on this map do not imply the expression of any opinion whatsoever on the part of the World Health Organization concerning the legal status of any country, territory, city or area or of its authorities, or concerning the delimitation of its frontiers or boundaries. Dotted lines on maps represent approximate border lines for which there may not yet be full agreement. © WHO 2005. All rights reserved

Framework



LONGITUDINAL FOLLOW-UP

Questionnaires – HH and Individual

BIOMARKERS AND PERFORMANCE TESTS

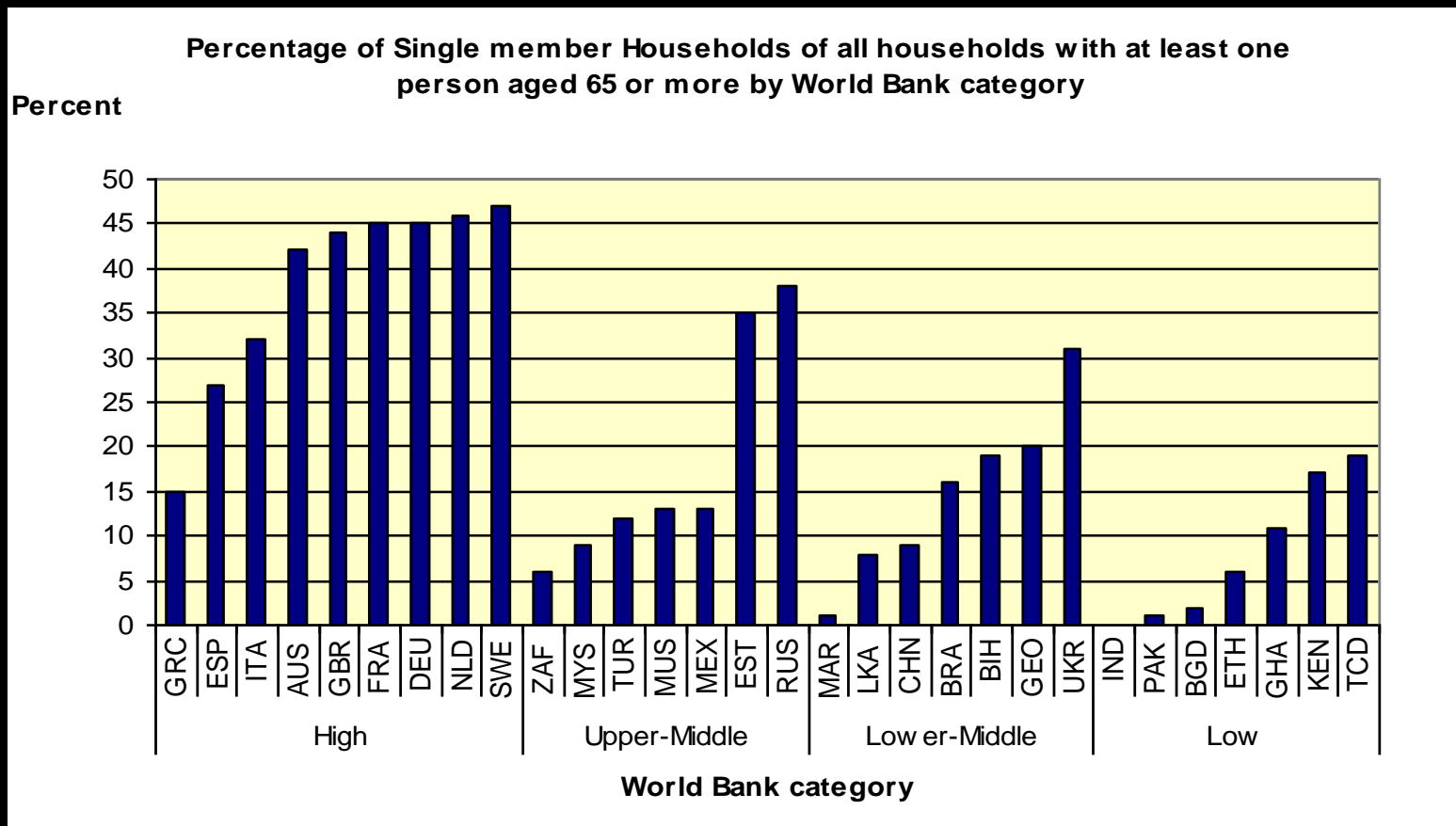
Health
ation

STUDY ON GLOBAL AGEING

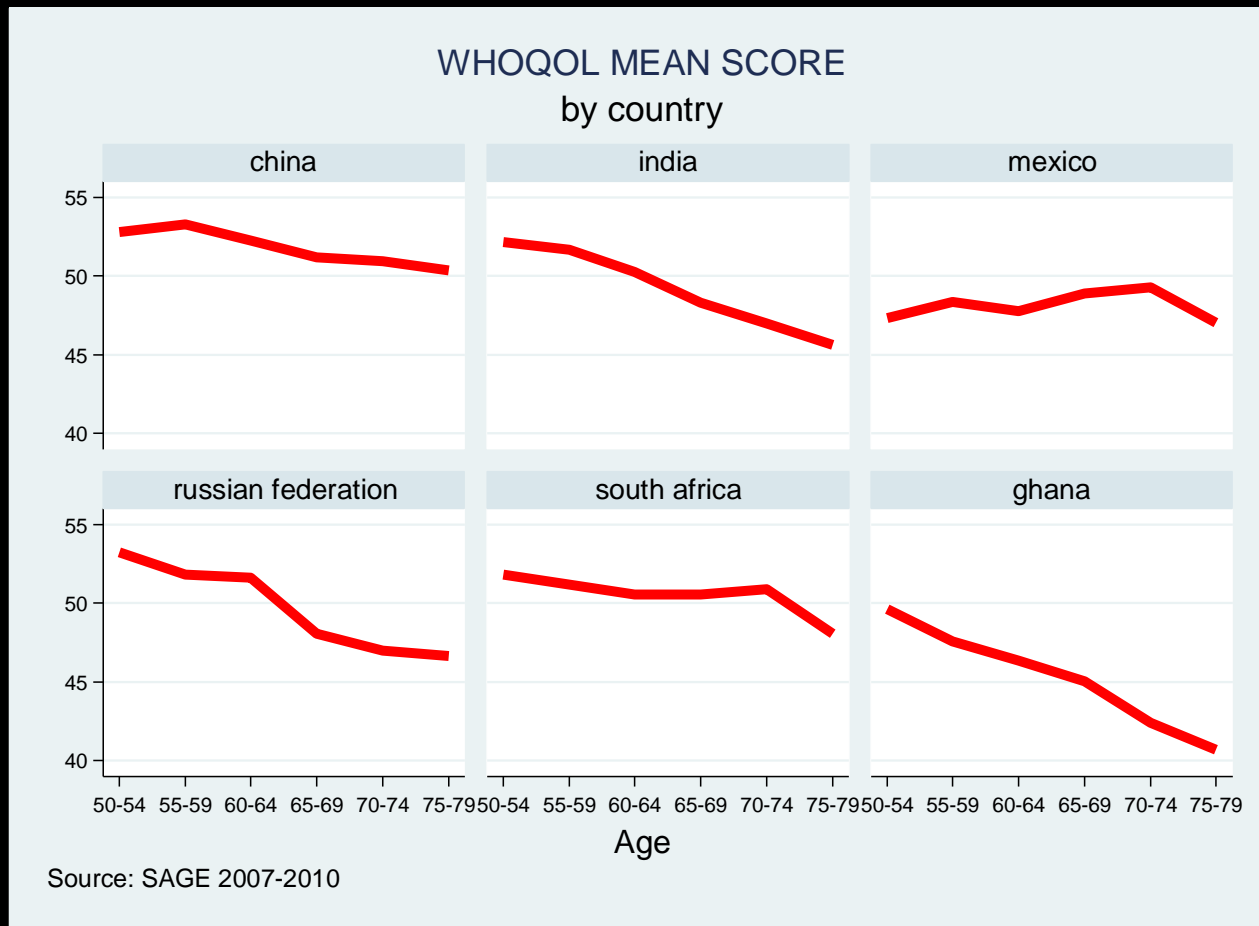
SAGE samples

- **China, Ghana, India, Mexico, Russian Federation and South Africa ~ 50,000 respondents**
- **Eight sites in the INDEPTH HDSS sites ~ 45,000 respondents**
- **COURAGE samples in Finland, Poland and Spain ~ 12,000 respondents**
- **Oversample of older adults 50+**

Living arrangements of the elderly

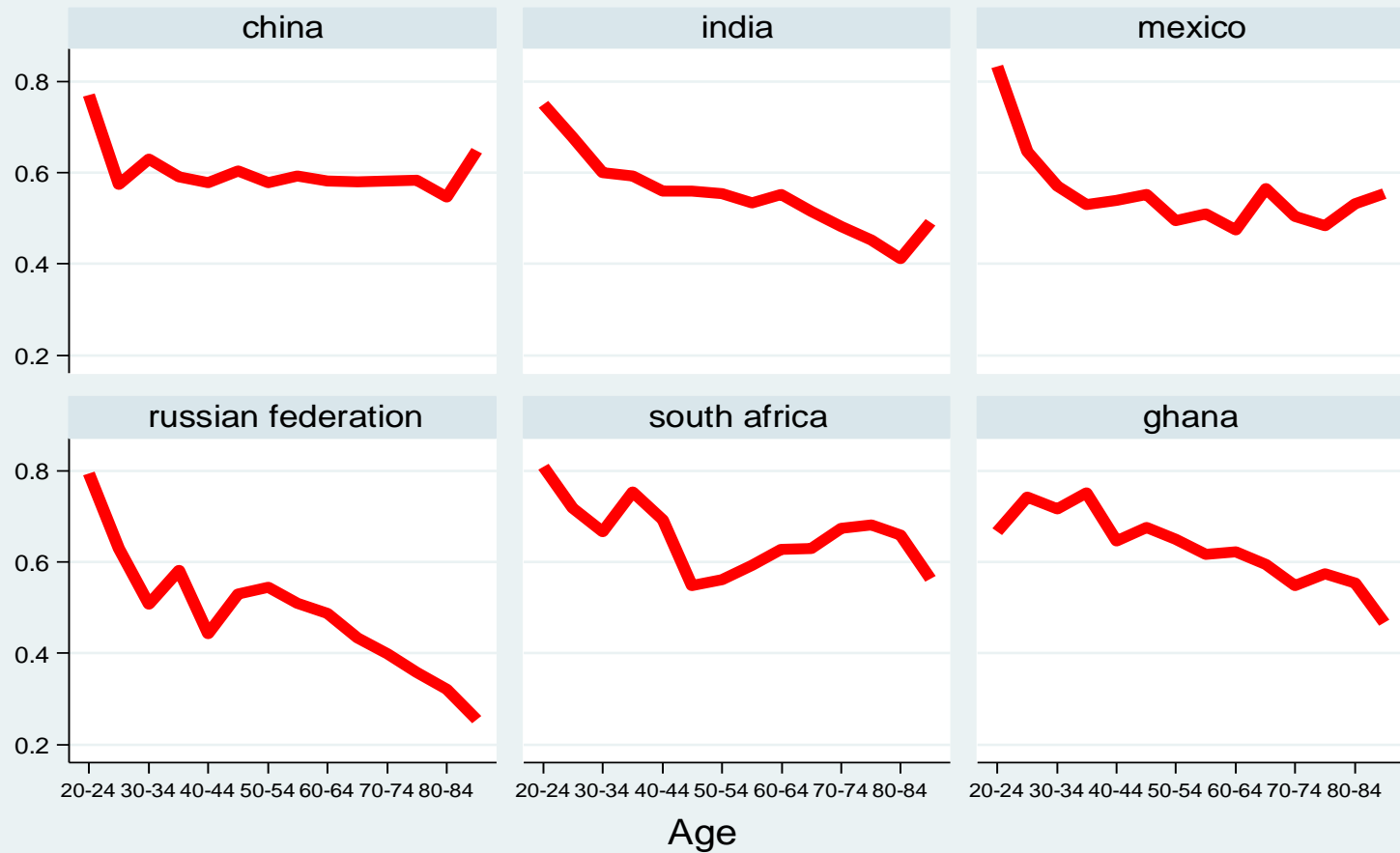


Quality of Life



Overall Happiness

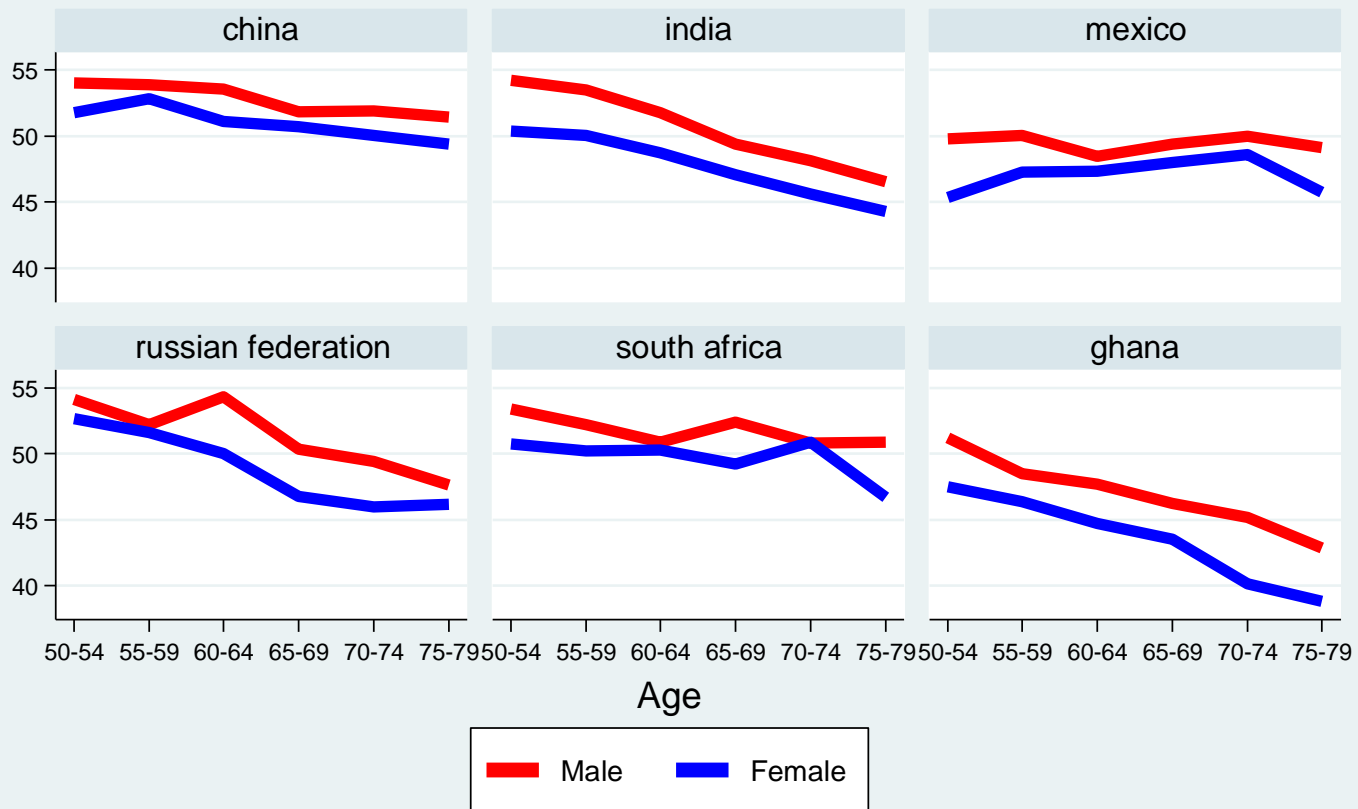
Happiness by Age



Source: SAGE 2007-2010

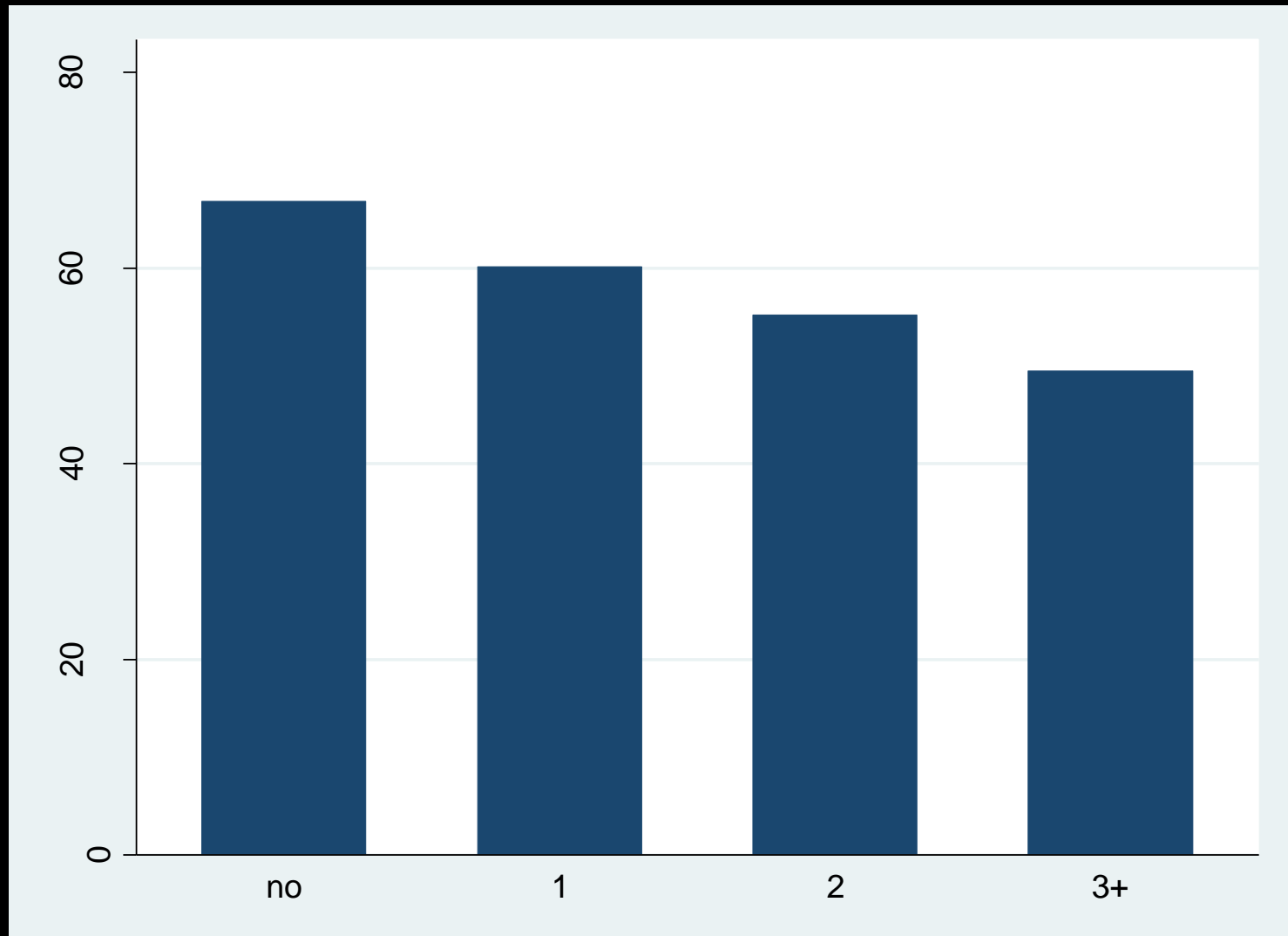
Quality of Life

WHOQOL MEAN SCORE
by country and sex



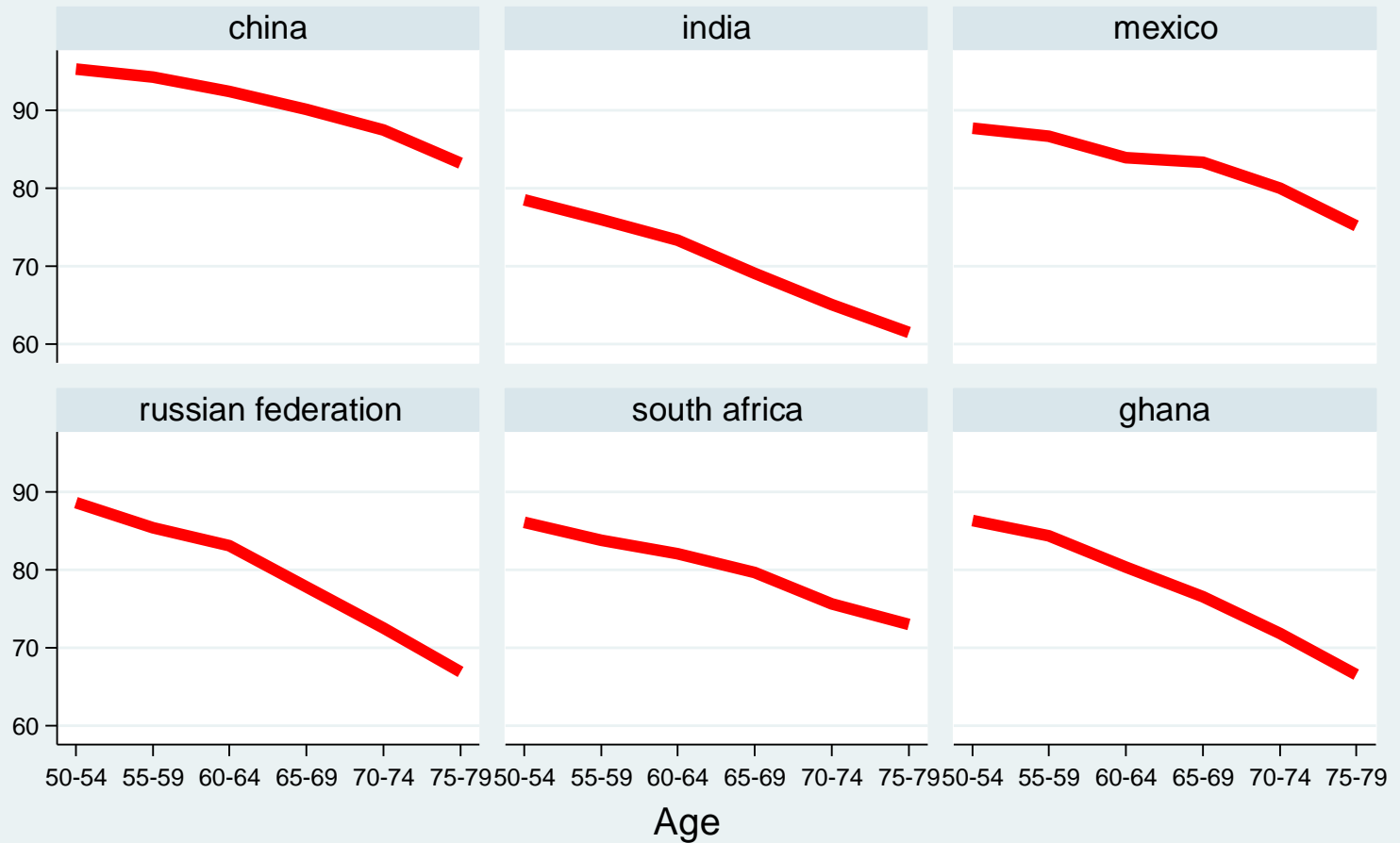
Source: SAGE 2007-2010

Quality of Life – Chronic Conditions



Disability

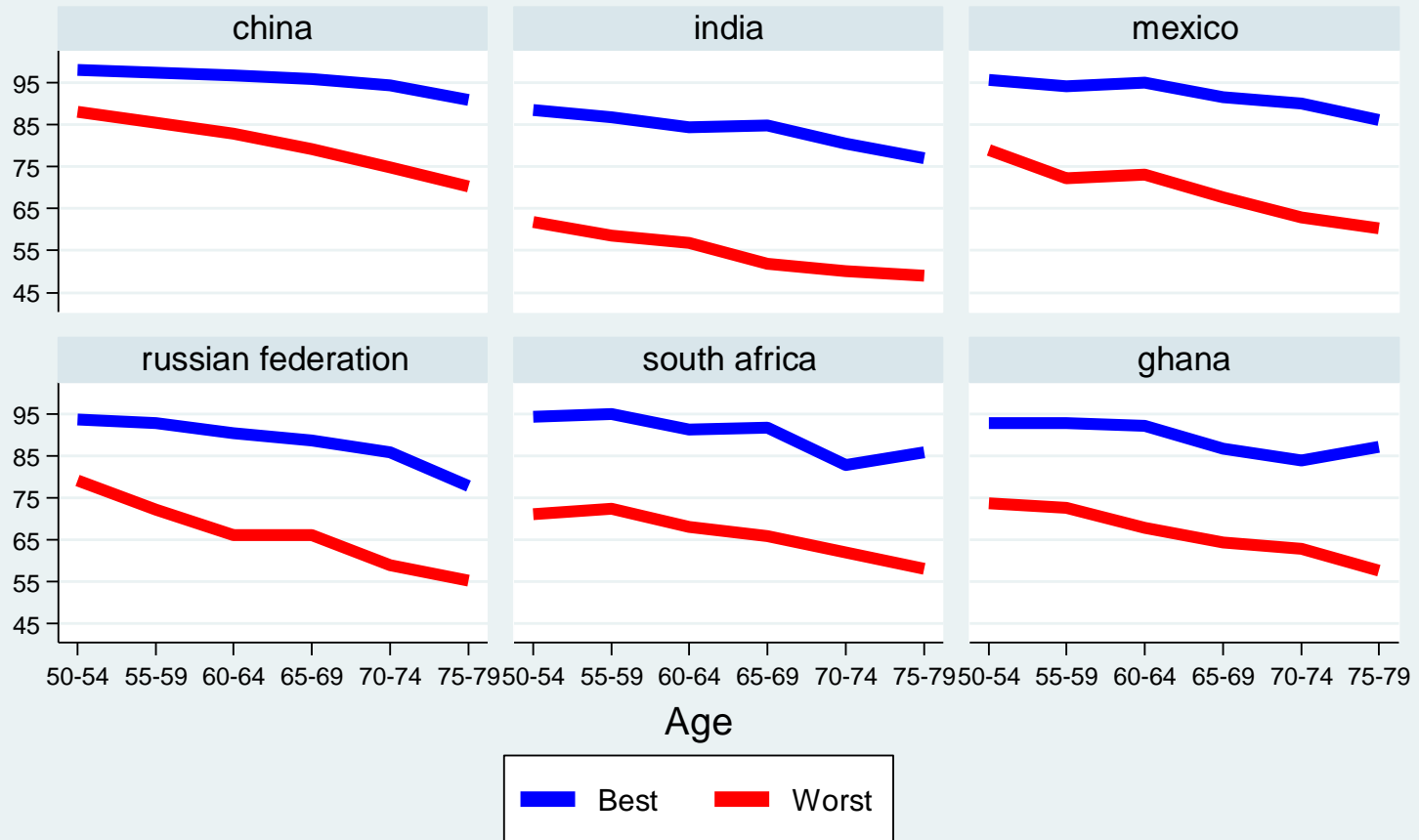
WHODAS MEAN SCORE
by country



Source: SAGE 2007-2010

Disability

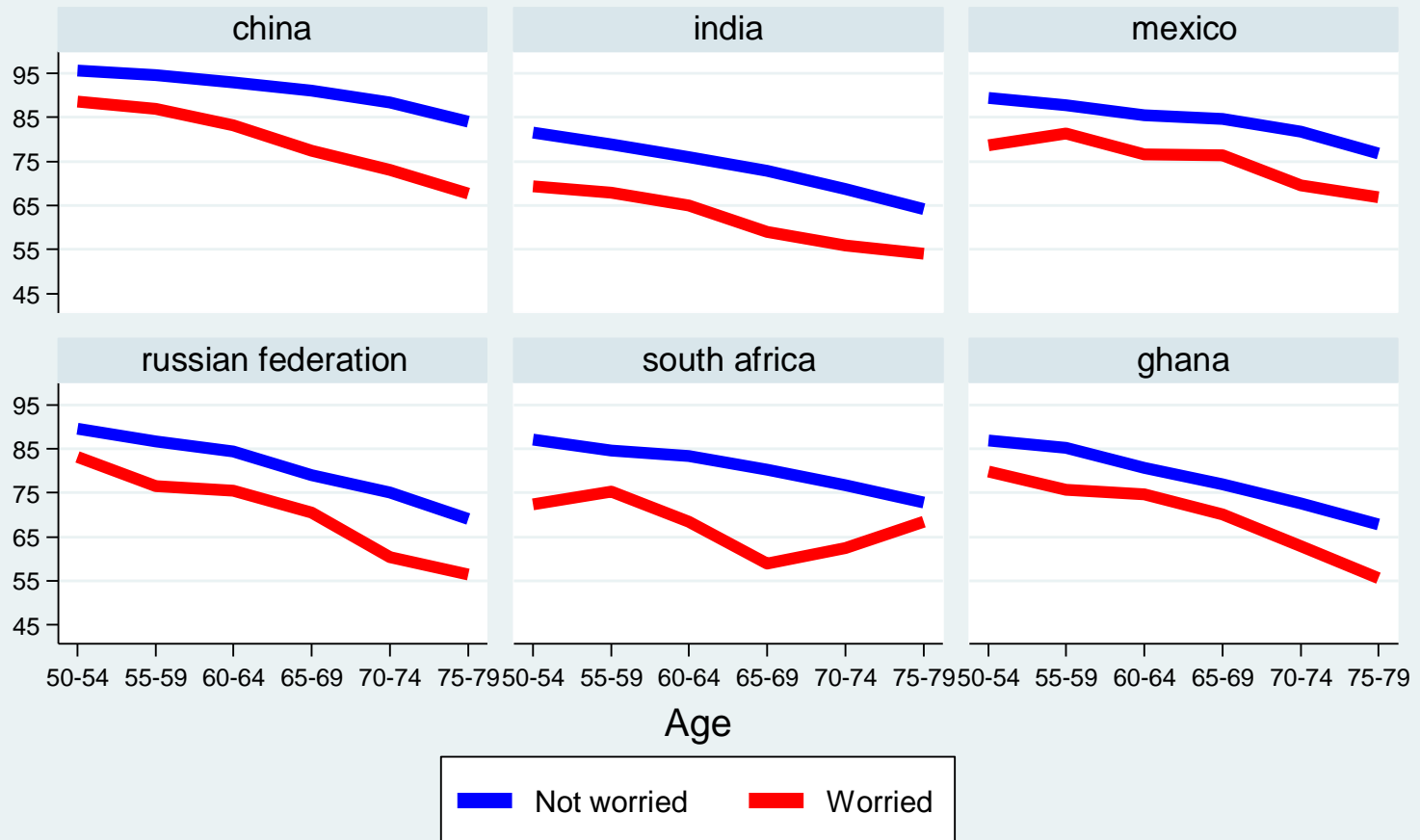
WHODAS MEAN SCORE
by country and best/worst whoqol quintile



Source: SAGE 2007-2010

Disability and Affect

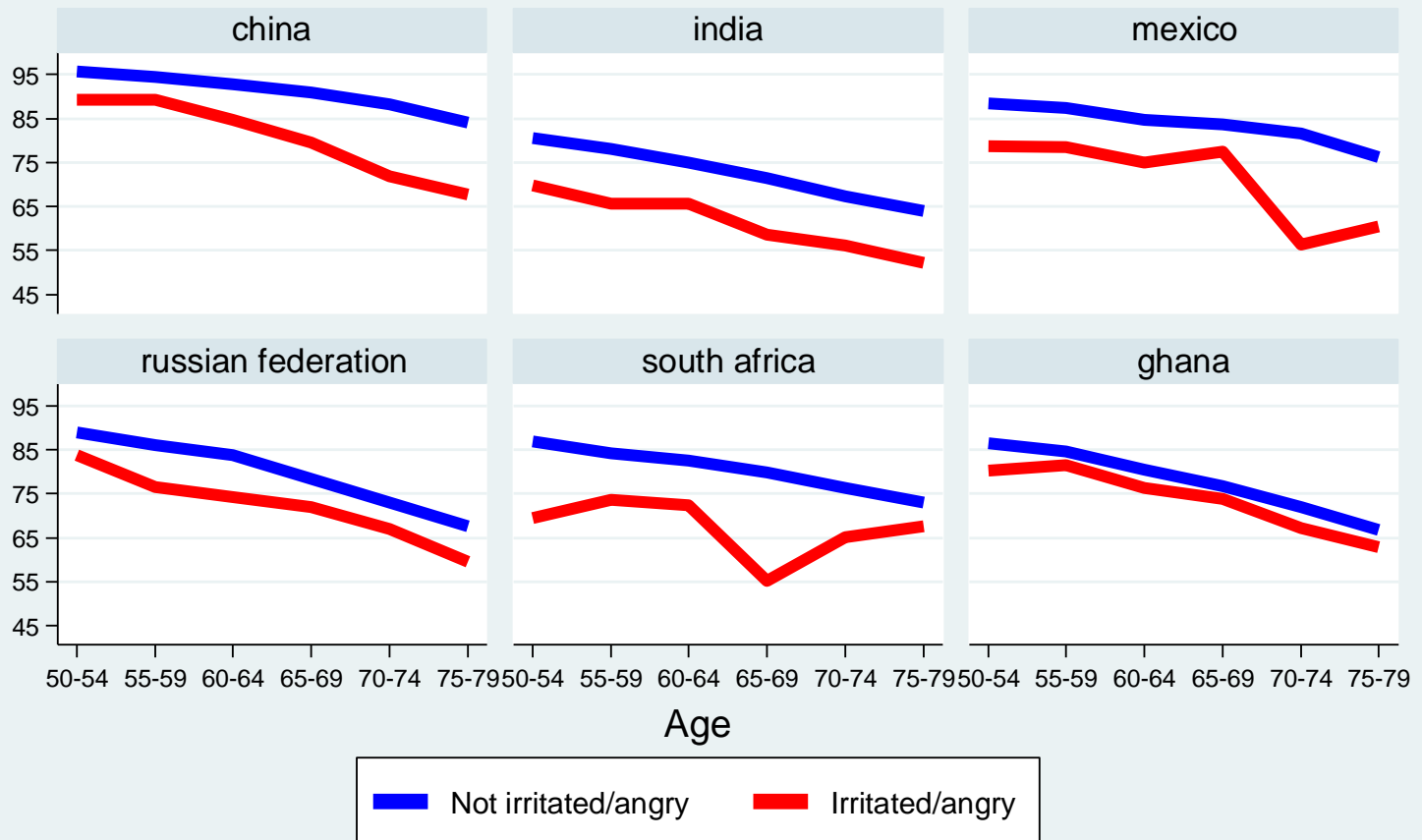
WHODAS MEAN SCORE
by country and worry



Source: SAGE 2007-2010

Disability and Affect

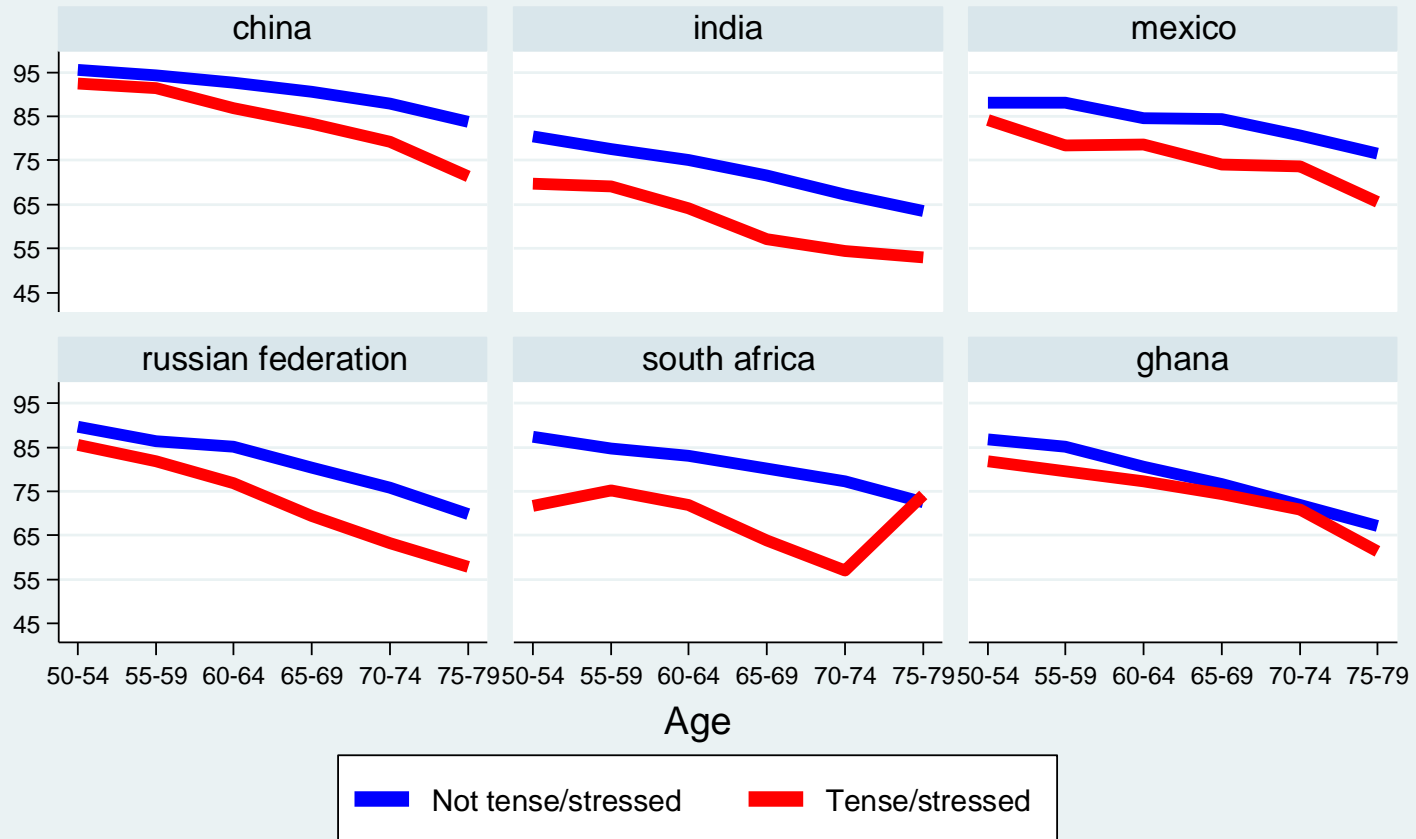
WHODAS MEAN SCORE
by country and irritated/angry



Source: SAGE 2007-2010

Disability and Affect

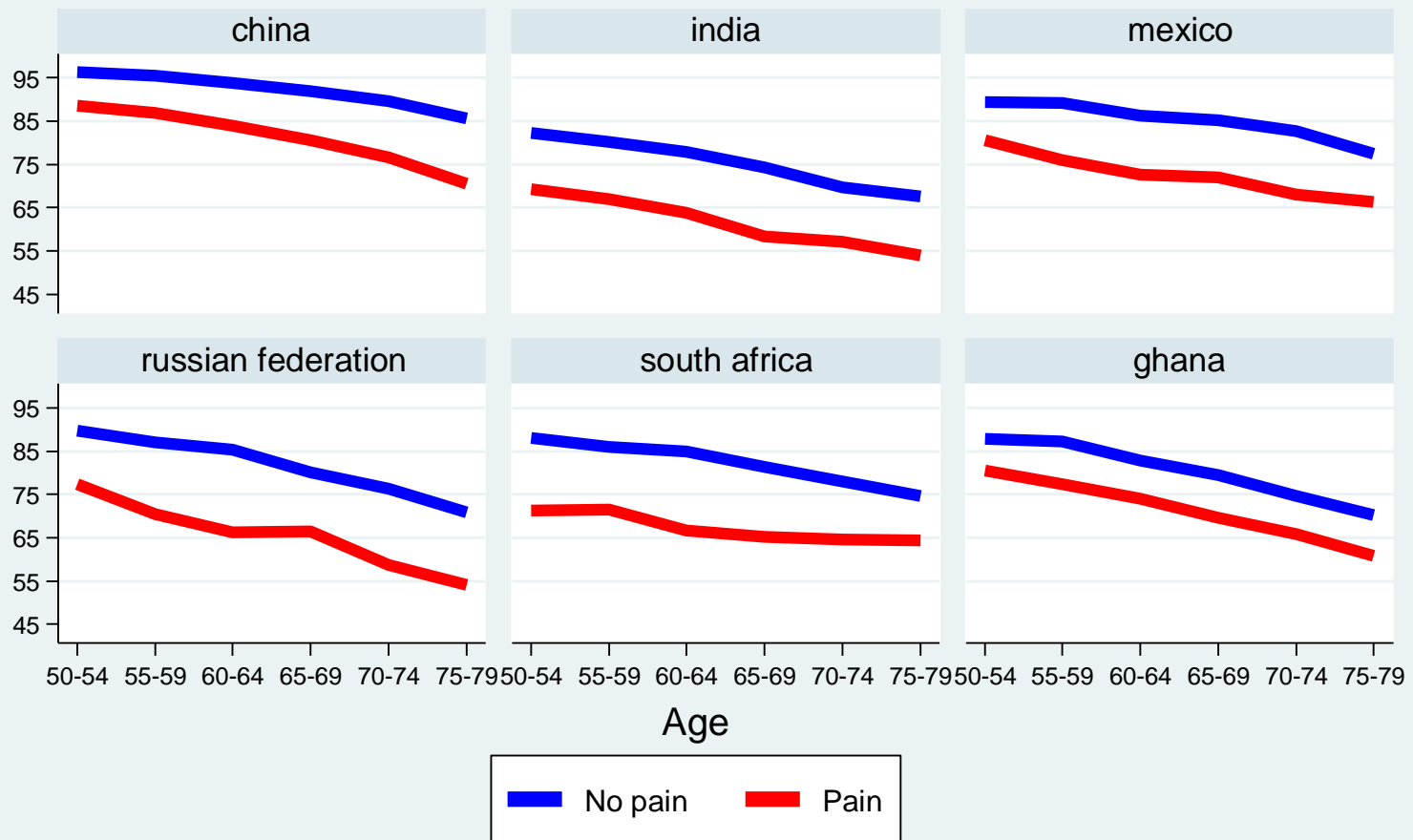
WHODAS MEAN SCORE
by country and stress



Source: SAGE 2007-2010

Disability and Pain

WHODAS MEAN SCORE
by country and physical pain



Source: SAGE 2007-2010

Affect and time use

Least Associated with positive affect

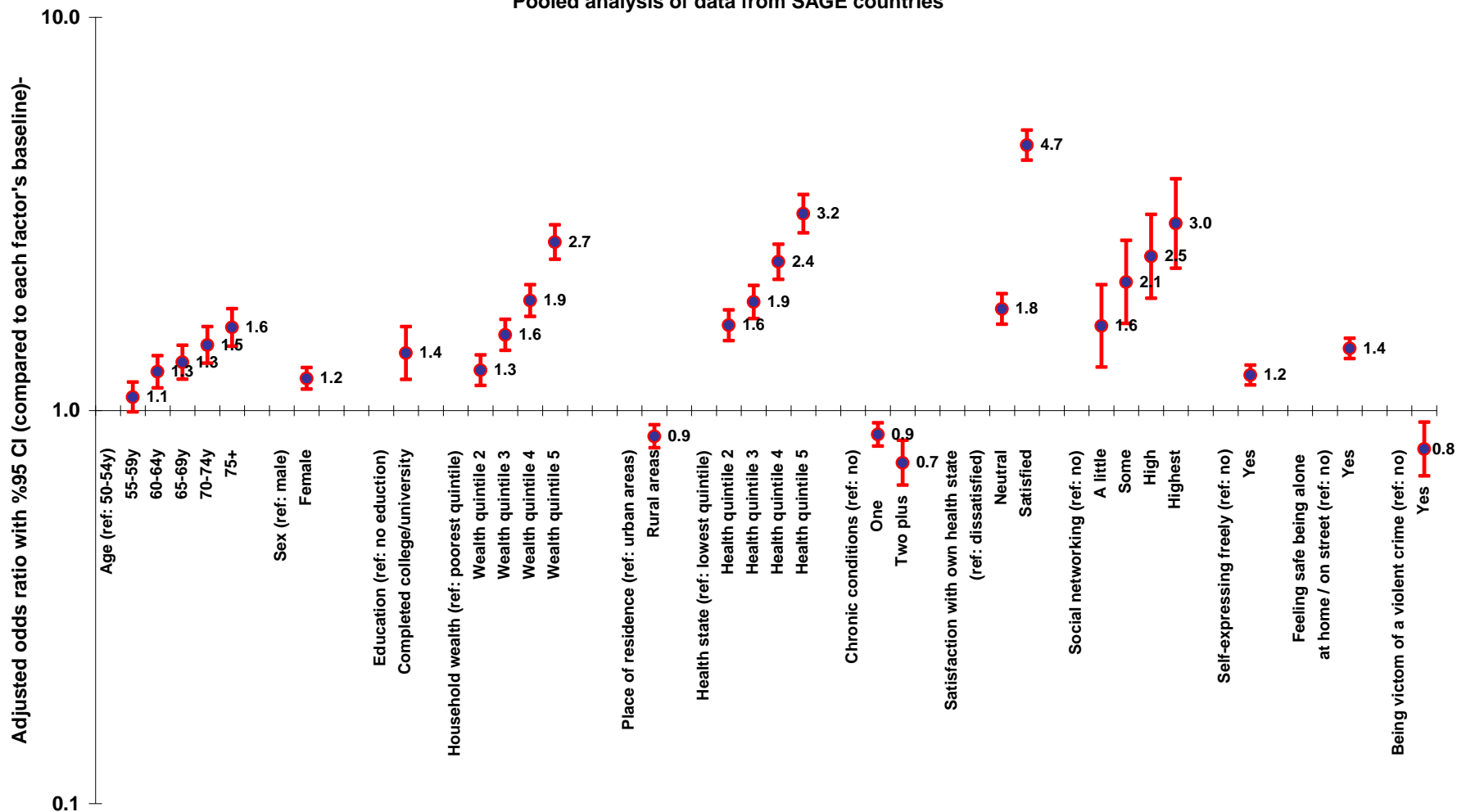
- Working
- Subsistence farming
- Doing housework
- Providing care to someone
- Traveling by bicycle
- Preparing food
- Traveling by car/bus/train
- Watching children

Most Associated with positive affect

- Intimate relationships
- Religious activity
- Watching TV
- Playing (cards/games)
- Reading
- Listening to radio

Determinants of Overall happiness

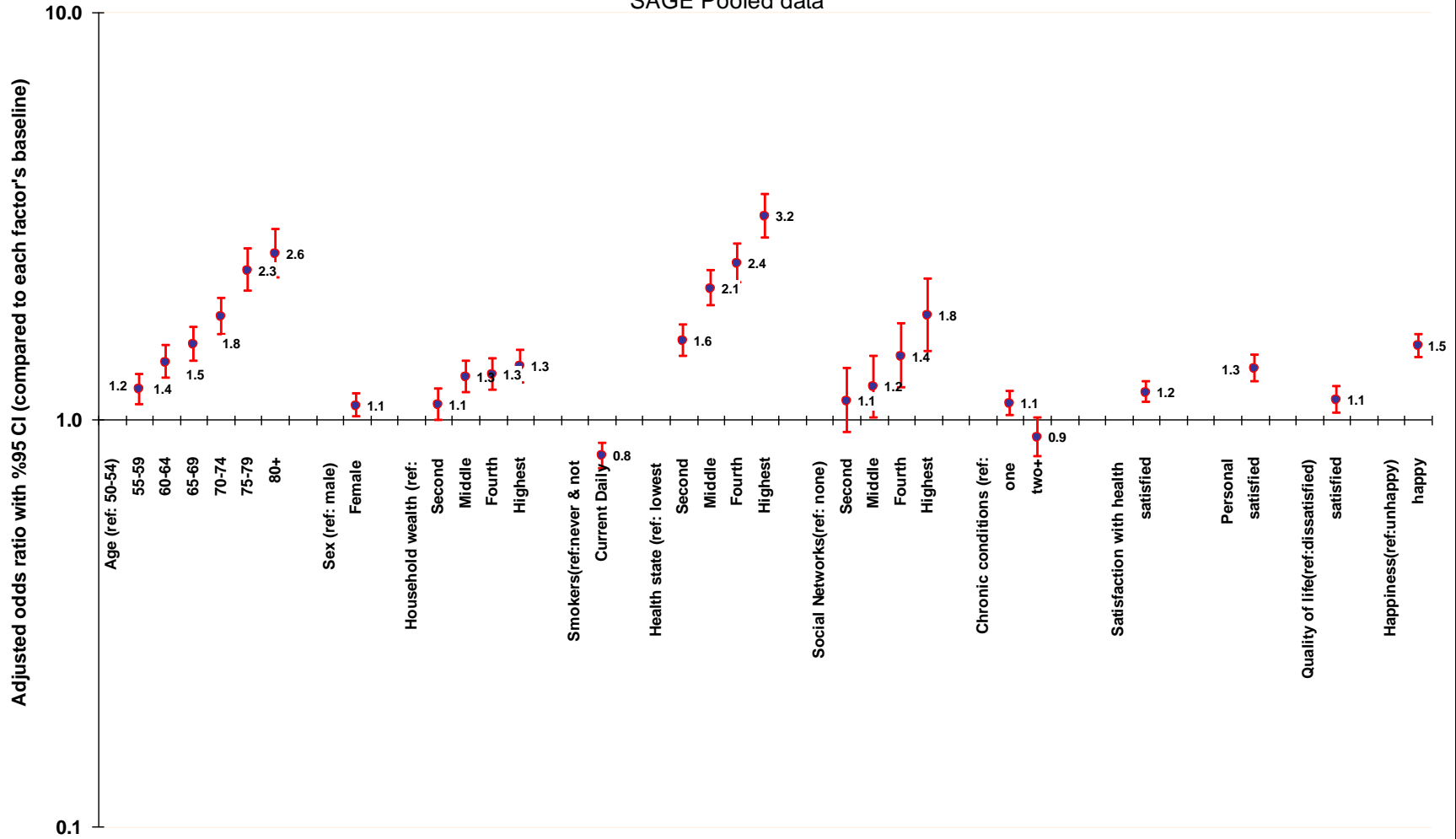
Determinants of happiness,
Pooled analysis of data from SAGE countries



Determinants of Net Affect

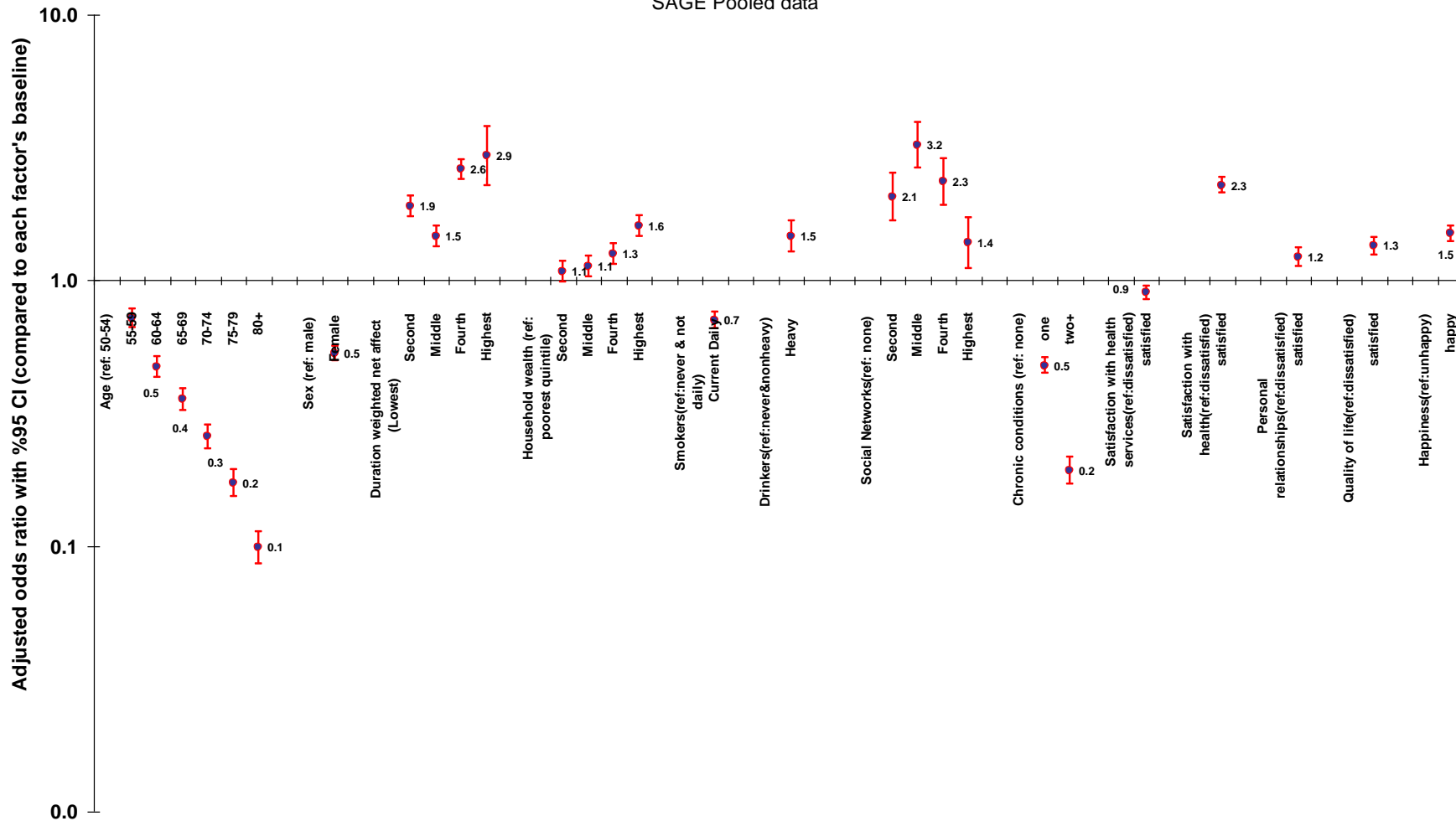
Determinants of Duration Weighted Net Affect

SAGE Pooled data



Determinants of health

Determinants of Health State
SAGE Pooled data



Summary

- Correlations between different measures about 0.5
- Overall happiness and experienced well-being have very similar determinants
- Strong relationship with health state, chronic disease and disability
- Consistent relationship with age, income, education, social networks and the broader environment

SAGE WEB SITE

<http://www.who.int/healthinfo/systems/sage/en/index.html>

