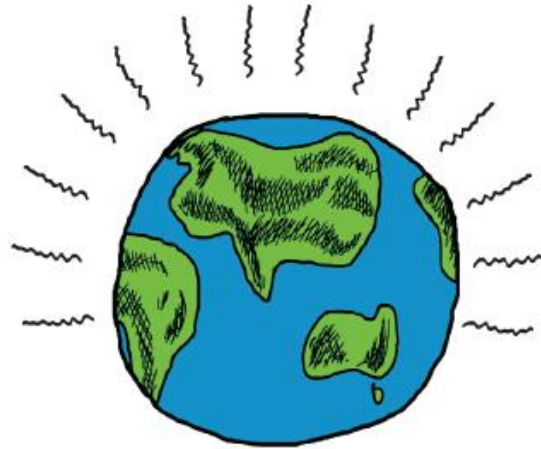




Home and Community Carers Supporting Clients With Sustainability Behaviours



**5 MILLION
PEOPLE**



www.environmentvictoria.org.au

Overview

Context

History of program

Program information

What next

Questions

Environmental Issues

Changing climate

Water availability in drought

Energy issues

Resource depletion

River system health

Species extinction

Waste production

Implications for seniors receiving care

Cost of energy

Cost of water

Food costs increasing

More heatwaves

Barriers

Low and fixed incomes

A larger proportion of income spent on basic services

Not being targeted by awareness raising messages

Being unaware of avenues for assistance

Disabilities creating unique barriers to completing action

Needing assistance in determining the right actions for their circumstances

Being unaware of new products that can assist to reduce impact

Being unaware of climate change and environmental issues

History

2007/2008

City of Greater Bendigo

140 staff trained

2008/2009

Colac-Otway Shire
City of Greater Geelong
Surf Coast Shire Council

432 staff trained
Providing services to
5,200

2009/2010

Currently working with
Latrobe City Council

115 staff trained
Services to 2000
300 audits completed &
100 homes with
retrofits installed

**So what does the
program do?**



Program



Training

2 ½ hour
workshop

Guide

Worksheet

Equipment



4	Water Heating, Showers and Toilets	
	Behaviour Change	
4.1	<p>Is the hot water system set at a higher temperature than it needs to be?</p> <p><input type="checkbox"/> Yes \Rightarrow</p>	<p><input type="checkbox"/> 4.1.1 Set the hot water service to 60°C if it's a storage hot water service (a large tank), or to 50°C or less if it is an instantaneous system (a small box on the wall).</p>
4.2	<p>Is shower length longer than 4 minutes?</p> <p><input type="checkbox"/> Yes \Rightarrow</p>	<p><input type="checkbox"/> 4.2.1 If possible, reduce shower length to 4 minutes or less per day.</p> <p><input type="checkbox"/> 4.2.2 Use a shower timer (there are some specially designed for elderly people).</p>
	Retrofit items OR new appliances needed	
4.3	<p>Has the shower head been changed over to a low-flow, water saving shower head?</p> <p><input type="checkbox"/> No \Rightarrow</p>	<p><input type="checkbox"/> 4.3.1 The showerhead needs to be changed to a low-flow shower head (usually available free of charge from the local water authority).</p> <p>Note : refer to grants & rebates available.</p>



Audit includes

Electricity purchase option

Heating & cooling

Insulation & draughts

Water heating, showers & toilets

Water leaks

Doing laundry

Appliances & standby energy

Lighting

Cooking & washing up

House cleaning

Waste





Program



**2 ½ hour
workshop**

**Collating audit
information**

Guide

**Identifying
solutions to
implement**

Worksheet

Equipment

Informing





Program



**2 ½ hour
workshop**

Guide

Worksheet

Equipment

**Collating audit
information**

**Identifying
solutions to
implement**

Informing

**Funding &
in-kind
donations**

Retrofits

Services

Volunteers



Program



**2 ½ hour
workshop**

Guide

Worksheet

Equipment

**Collating audit
information**

**Identifying
solutions to
implement**

Informing

**Funding &
in-kind
donations**

Retrofits

Services

Volunteers

**Organising
installations**

**Ensure
behaviour
changes are
relevant**



What next?

Sustainability Home Audit Training for Home and Community Care (HACC) Workers | Environment Vic - Windows Internet Explorer

http://www.environmentvictoria.org.au/HACC_training

File Edit View Favorites Tools Help

★ Favorites | ★ Suggested Sites | Get More Add-ons

Sustainability Home Audit Training for Home and Com...

Home

Sustainability Home Audit Training for Home and Community Care (HACC) Workers

Environment Victoria has put together a free training package for organisations working with Home and Community Care Workers, to help carers to help their clients to reduce their environmental impact and save energy and water. The training helps clients meet the coming challenge of climate change, as well as cutting the cost of their bills, as energy and water prices rise.

The training aims to provide HACC staff with the knowledge and tools to do simple sustainability audits of clients' homes during their normal visits. The audits give the seniors and their families a whole host of suggestions of things they can do to make the home more sustainable and more comfortable, from simple things like blocking draughts, to bigger things like replacing bar radiators with more effective heating systems. The training package provides all of the tools you need to train HACC staff and to help staff to complete audits.

The training is based on our experience of training HACC workers from the City of Greater Bendigo, the Colac Otway Shire and the Surf Coast Shire. It came out of our Regional Sustainable Living Program, which has been working with senior citizens for a number of years. The program was made possible through funding from the Victorian [Department of Sustainability and the Environment](#).

To check out the training package on screen, click on each of the document images below. Then download, either by clicking on the link below to get the whole package as a compressed file, or clicking on the individual document names to download them one by one.

Sustainability Home Audit Training for Home and Community Care (HACC) Workers - download the whole package ▶ (13 MB)

1. [Complete carer training guide](#) ▶ (600 kB)

SHARE

LEARN MORE

- ▶ Turning it around: a
- ▶ Young People and...
- ▶ Multicultural Leaders
- ▶ The Quick Guide to
- ▶ A Community Action

TAKE ACTION

- ▶ Work in an office in
- ▶ Replace Hazelwood
- ▶ You're invited to...
- ▶ Have your say on the
- ▶ Let's push our...

GIVE

- ▶ Become a monthly d
- ▶ Make one-off donati
- ▶ Give a gift donation
- ▶ Volunteer some time

SHARE

We've been talking about



www.environmentvictoria.org.au/HACC_training

This project was funded by the Department of Sustainability and Environment

A Victorian Government initiative





Home and Community Carers Supporting Clients With Sustainability Behaviours