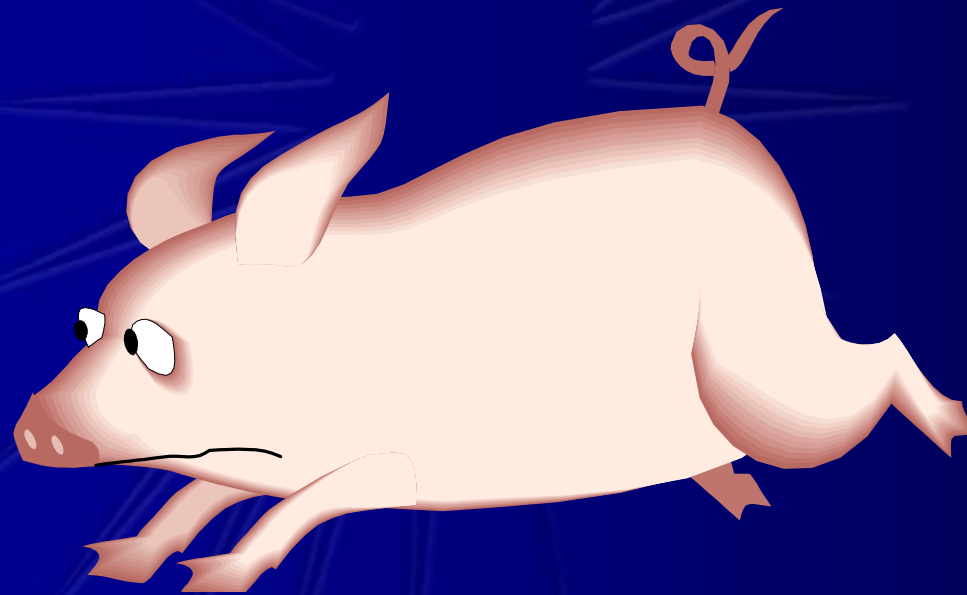


Swine Flu – Putting Plans into Practice and Dealing with the Impact when Caring for our Older Clients

Fiona Hearn
May 2010

H1N1 response



Government Plans

Victorian health management
plan for pandemic influenza
July 2007



A Victorian
Government
initiative


Victorian Human Influenza
Pandemic Plan
Community Support and Recovery Sub Plan
March 2008



A Victorian
Government
initiative


Human Influenza Pandemic
What your organisation needs to do



A Victorian
Government
initiative




H1N1 Influenza 09 (Human Swine Flu)


[Health home](#) > [Human Swine Flu](#)

H1N1 Influenza 09 (Human Swine Flu)

Current situation

Get your FREE vaccination for Swine flu now

A vaccine to protect against the Swine flu (H1N1 Influenza 09) is now available. You can protect yourself and help stop the spread of Swine flu to others by being vaccinated at your General Practitioner's office or local health service.

 [Flyer - Get your free vaccination for Swine flu now \(221kb, pdf\)](#)

Vaccination program

Australia's Swine flu [vaccination program](#) focuses on protecting the most vulnerable people in our community first.

Headline figures as of Friday 26 March 2010

Home

[General public](#)

[Schools](#)

[Health practitioners](#)

[Aged care services](#)

[Community services](#)

[Government](#)

[Business](#)

[Media](#)

[Vaccine program](#)

[Resources](#)

[Other languages](#)

[Contacts](#)

More information

[Human Swine Flu fact sheet](#)


[Information for pregnant women](#)

 [Poster: Protect yourself your family - Cover your cough and sneeze \(137kb, pdf\)](#)

 [Poster: Protect yourself your family - Wash your hands regularly \(137kb, pdf\)](#)

Fact sheets

 [Frequently asked questions - General public - 23 June 2009 \(63kb, pdf\)](#)

 [Frequently asked questions - Aboriginal people in Victoria \(103kb, pdf\)](#)

 [Information for the general public - 23 June 2009 \(77kb, pdf\)](#)

Role of Infection Control Nurse

- Pandemic planning
- Maintain register of affected staff
- Manage distribution of RDNS PPE
- Monitor websites and media - upload pertinent information to intranet
- Participate in planning forums
- Respond to staff concerns

Influenza A home

- Guidelines & Education Resources
- FAQs
- News & Updates

FAQs Editing function, Site Members only

Potential Flu Cases

- Telephone List
- Site Attributes

Recycle Bin

Home > My Clients > Infection Control > Influenza A (H1N1 Virus) - Swine Flu

Influenza A (H1N1) Virus - Information Site

RDNS has activated its Management Plan for Pandemic Influenza in response to the overseas outbreak of Influenza A (H1N1) Virus. This plan coordinates our response in relation to the Australian national and state plans. There are a number of alert levels within our plan. This site provides information, documentation and education required for all staff related to the alert level activated.

Victoria is now in the PROTECT phase which sits alongside the contain and sustain phases. We continue to enhance surveillance and detection measures, ensure all staff are knowledgeable on appropriate infection prevention measures, monitor and provide protective equipment as necessary, monitor sick leave, ensure business continuity, and liaise with Victoria DHS as required.

Latest News & Updates

@	Title	Comments	Posted
---	-------	----------	--------

There are no items to show in this view of the "News & Updates" list. To create a new item, click "New" above.

Add new announcement

Guidelines & Education Resources

Priority	Name	Comments	Posted
1	Flow Chart H1N1 - Swine Flu - PPE in Client Care v4	Flow chart to assist in the selection and use of PPE in client care for the management of Influenza.	18/08/2009



Identifying a Potential Influenza A (H1N1) Case

1. The steps to identify a potential Influenza A (H1N1) case or contact are contained in the RDNS document [Guidance for the Recognition H1N1 virus - Swine Flu.](#)
 Use these steps and if your assessment identifies a potential case or contact, proceed to register the details (below).
2. Follow this guideline when providing client care for a confirmed case or contact [Guidance for the Use of Protective Equipment in Client Care.](#)
3. Follow this step by step diagram to show you [How to fit and check a P2/N95 mask.](#)

Registering a Potential Influenza A (H1N1) Case

1. It is extremely important that your register the details of a potential case or contact. Please note that the record you enter will be confidential. Once entered the information will only be visible to the RDNS Infection Control Team.



Staff Response



- Volunteers for DHS support Centre
- Range of shifts
- Range of roles
 - Calls
 - Contact Tracing
 - Preparation of Tamiflu
- Managing workload with existing staff
- Staff quarantined
- PPE

Client Impact



- Clients isolated
 - Contact
 - infection
- Allaying anxiety
- Relationship to others
- Information for staff to recognise cases
- Ensure needs met



Observations

- Provide staff with up to date, relevant information
- Same for clients – ensure staff prepared to inform clients
- Limited (not extensive) supply for immediate access eg masks
- Central communication point (intranet site)
- Staff do respond and take on additional responsibility at short notice.