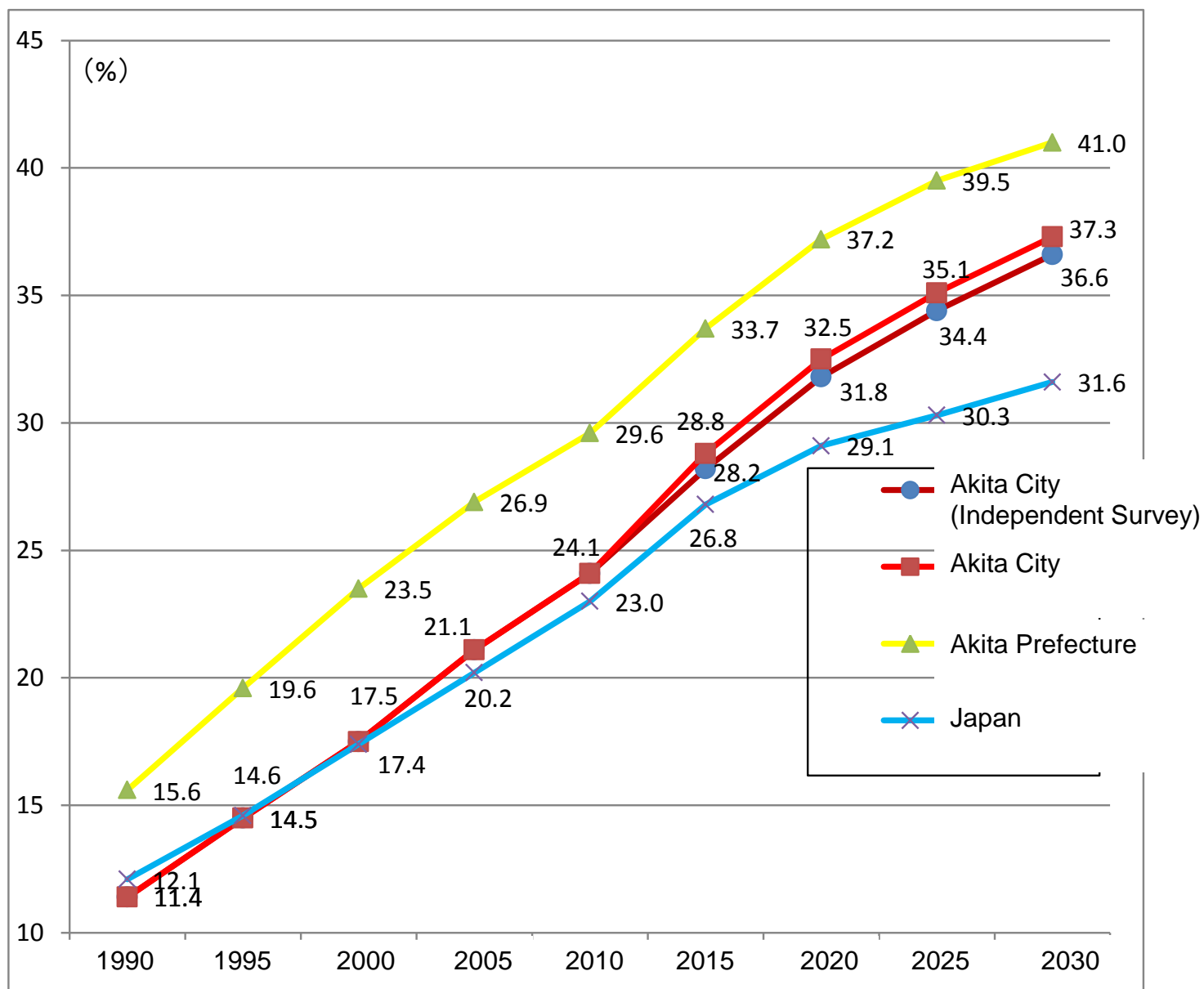


# Efforts of Akita Age-Friendly City

**Longevity and Welfare Division  
Health and Welfare Department**



# Changes in Aging Rate



# Changes in Aging Rate

	1990	1995	2000	2005	2010	2015	2020	2025	2030
<b>Akita City (※)</b>	11.4	14.5	17.5	21.1	24.1	28.2	31.8	34.4	36.6
<b>Akita City</b>	11.4	14.5	17.5	21.1	24.1	28.8	32.5	35.1	37.3
<b>Akita Prefecture</b>	15.6	19.6	23.5	26.9	29.6	33.7	37.2	39.5	41.0
<b>Japan</b>	12.1	14.6	17.4	20.2	23.0	26.8	29.1	30.3	31.6

Changes in Aging Rate of Akita City (※Independent Survey), Akita Prefecture, and Japan



# Efforts of Akita City from 2009 to 2011

Year	Activities
2009	<ul style="list-style-type: none"><li>▪ Started to conceive the Akita Age-Friendly City to fulfill Mayor`s campaign promises</li><li>▪ Had a study group in a city hall to assess Akita city which in terms of WHO`s 84 checklists</li></ul>
2010	<ul style="list-style-type: none"><li>▪ Established the Akita Age-Friendly Plan Promotion Group</li><li>▪ Did a survey to understand citizen`s attitude and needs to help develop the plan of Akita Age-Friendly City</li><li>▪ Established “Realization of Age-Friendly City” as the growth strategy in a master plan of Akita city</li></ul>
2011	<ul style="list-style-type: none"><li>▪ The Akita Age-Friendly City Plan Promotion Group personally delivered the “Proposal Document for the Akita Age-Friendly City Plan” to the Mayor of Akita City</li><li>▪ Held the 1st Akita Age-Friendly City Forum(~2013)</li><li>▪ Invited International Federation on Ageing for the first time to an event on Age-Friendly Cities. Expressed desire to the WHO to participate in the WHO Global Network of Age-Friendly cities and communities (~2013)</li><li>▪ Approved by the WHO to join the WHO Global Network of Age-Friendly cities and communities</li></ul>



# Efforts of Akita City from 2012 to 2016

Year	Activities
2012	<ul style="list-style-type: none"> <li>▪ Akita Mayor, Hozumi, read a report of Akita City`s policies at the 11<sup>th</sup> International Federation on Ageing Global Network</li> <li>▪ Established “Age-Friendly Akita Citizen Association”</li> </ul>
2013	<ul style="list-style-type: none"> <li>▪ Established the Akita Age-Friendly City Action Plan</li> </ul>
2014	<ul style="list-style-type: none"> <li>▪ Established the committee for developing the Akita Age-Friendly City Action Plan</li> <li>▪ Held 3 seminars and 5 workshops of Akita Age-Friendly City College</li> <li>▪ Published brochures on Akita Age-Friendly City(2 or 3 times per year)</li> </ul>
2015	<ul style="list-style-type: none"> <li>▪ Created a symbol for Akita Age-Friendly City</li> <li>▪ Started the Akita Age-Friendly City Partner Program, which involves corporations and groups that promote an Age-Friendly spirit and take actions to help the elderly to live easier and more comfortably</li> <li>▪ Established the indicator for Akita Age-Friendly City</li> <li>▪ Held an exhibition, “Age 2240 style -Wiser people who take advantage of their time-”</li> </ul>
2016	<ul style="list-style-type: none"> <li>▪ Established the 2nd Akita Age-Friendly City Action Plan</li> </ul>



# Concrete Efforts 1 The One-Coin Bus Project

## 1 Started:

October, 2011

## 2 Project Outline:

The Discount System that allows the elderly, more than 70 years old, to take a bus for 100yen by showing a one-coin bus certificate issued by Akita city hall. The scope has been expanded to those aged 68 years old or older since 2015, and furthermore, it will be expanded to 65 years old or older in October 2017.



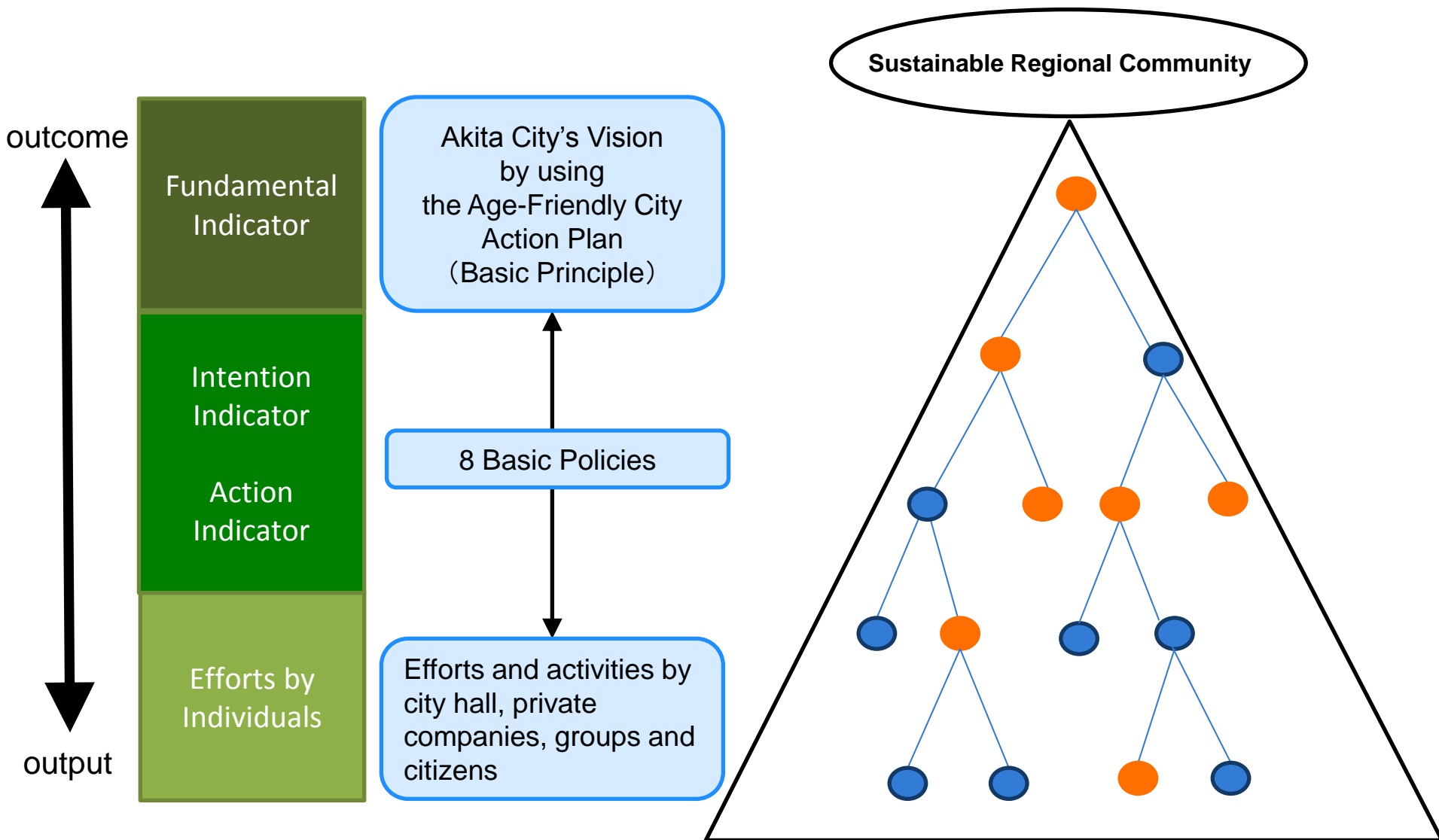
**To Promote going out by the elderly  
for social participation and creating purpose in life**

コインバス資格証明書	
受住 所	秋田市 〇〇〇丁目〇-〇〇
姓 名	〇〇〇〇〇〇〇〇
生年月日	〇〇年〇月〇日
発行機関名 および印	秋田市 市長 〇〇〇〇〇
平成23年10月1日から有効	

A sample of a one-coin bus certificate



# Concrete Efforts 2 The Indicator for Akita Age-Friendly City



# Examples of the Indicator

- Designed the structure of the Indicator to help the public understand the goals of Akita Age-Friendly City, which consisted of the Fundamental Indicator assessing the Basic Principle, and Intention and Action Indicator assessing 8 Basic Policies
- Established the Indicator in 2015 and started to apply it in 2016
- Revise the Indicator while considering operating effectiveness

**The Indicator for Akita Age-Friendly City**

Basic Principle	Fundamental Indicator (Subjective)	Basic Policies	Intention Indicator (Subjective)	Action Indicator (Objective)	
To create a society in which people can lead a lively life by continuing to be active and contributing to their local communities even in older age	Assessing the percentage of the elderly who feel personally fulfilled in their lives	1 Organize outdoor spaces, buildings, and facilities where people can gather safely	Find the percentage of the elderly who feel comfortable going out in their neighborhood	1-1	Find the percentage of barrier-free facilities
				1-2	Find the number of traffic incidents involving the elderly
				1-3	Find the number of fraud cases involving the elderly
		2 Improve the convenience of transportation facilities	Find the percentage of the elderly who feel the public transportation is convenient and easy to use	2-1	Find the percentage of the elderly participating in the One-Coin Bus Program
				2-2	Find the percentage of handicapped-accessible buses
				2-3	Find the number of wheelchair accessible and special-needs taxes



# Concrete Efforts 3      The Akita Age- Friendly Partner Program

**1 Started:**    April, 2015

**2 Project Outline:**

Established the registration and certification for companies and groups as “Age-Friendly Partner”, which continue their efforts under the Akita Age-Friendly Partner Program

**3 Example of the efforts:**

- Displaying signs in a font that is easy to read
- Displaying merchandise in a way that is easy to access
- Seminar for the general public to better support the elderly especially those with cognitive impairment
- A free drink service to the elderly who show the one-coin bus certificate
- Making benches available for public use

**4 Registered companies or groups:**    77 (2017/8/9)



**Working with private companies  
to promote Akita Age-Friendly City**



# Examples of the efforts by companies in the Akita Age-Friendly Partners Program

## ■ Akita Bank Declared Age-Friendly Bank on 2014

- Established the Platinum-Town Society

The purpose of this organization is forming vigorous and sustainable local communities where the elderly live healthy and happy.

- Held a seminar to teach the keys to longevity
- Installed shelves on all Akita Bank's ATMs

## ■ Akita Castle Hotel Declared Age-Friendly Hotel on 2014

- Established a committee to plan Age-Friendly hotel

The committee is composed of the hotel's staff in each department, and the general manager acts as a chairperson.

## ■ Other registered companies or groups

- Akita city General Hospital, Akita Tanita Restaurant, Tobu Gas Akita branch, and more

**長生き学校**  
長活きの秘訣を、学びあう。

————— プレセミナー受講生募集 —————

平成28年4月あきぎん長活き学校の開校に先立ち、プレセミナーを開催します。  
プレセミナーでは、県内各方面でご活躍の先生をお招きして、長活きの秘訣を学びあいます。  
ぜひこの機会に、長活き学校の授業を体験してみませんか？

【第1回プレセミナー】	【第2回プレセミナー】
◆テーマ／みんなが集まる場を作ろう ～「読み聞かせ」や「歌」の持つチカラ～	◆テーマ／ただ一心に、何かを作る。 ～「御殿まり」や「寒天」を通じて～
◆先生／グループかぜ……………谷 京子さん 道の駅十文字ボランティアー……………柴田 陽子さん	◆先生／御殿まりを受ける会……………阿部 登志子さん 寒天名人……………照井 律さん
◆日 時／平成28年2月25日(木) 13:00～15:00	◆日 時／平成28年3月9日(水) 13:00～15:00
◆会 場／秋田拠点センターアルヴェ [2階 多目的ホール]	◆会 場／由利本荘市文化交流館カダーレ [3階 自然科学学習室2]
◆申込締切／平成28年2月12日(金)	◆申込締切／平成28年2月26日(金)



# The Symbol for Akita Age-Friendly City

## ■ Description of the symbol

The symbol has the motif of the “A” of Akita and Age, and expresses Age-Friendly City in a soft curved figure written with a single stroke of the brush

## ■ Creation Process

We got 142 works from applicants throughout Japan. The youngest was 13 years old and the oldest was 80 years old.

## ■ Examples of the use of the symbol

Pin Badges, Clear Document Folders, Age-Friendly Partner Certificates and Stickers, etc



A Pin Badge

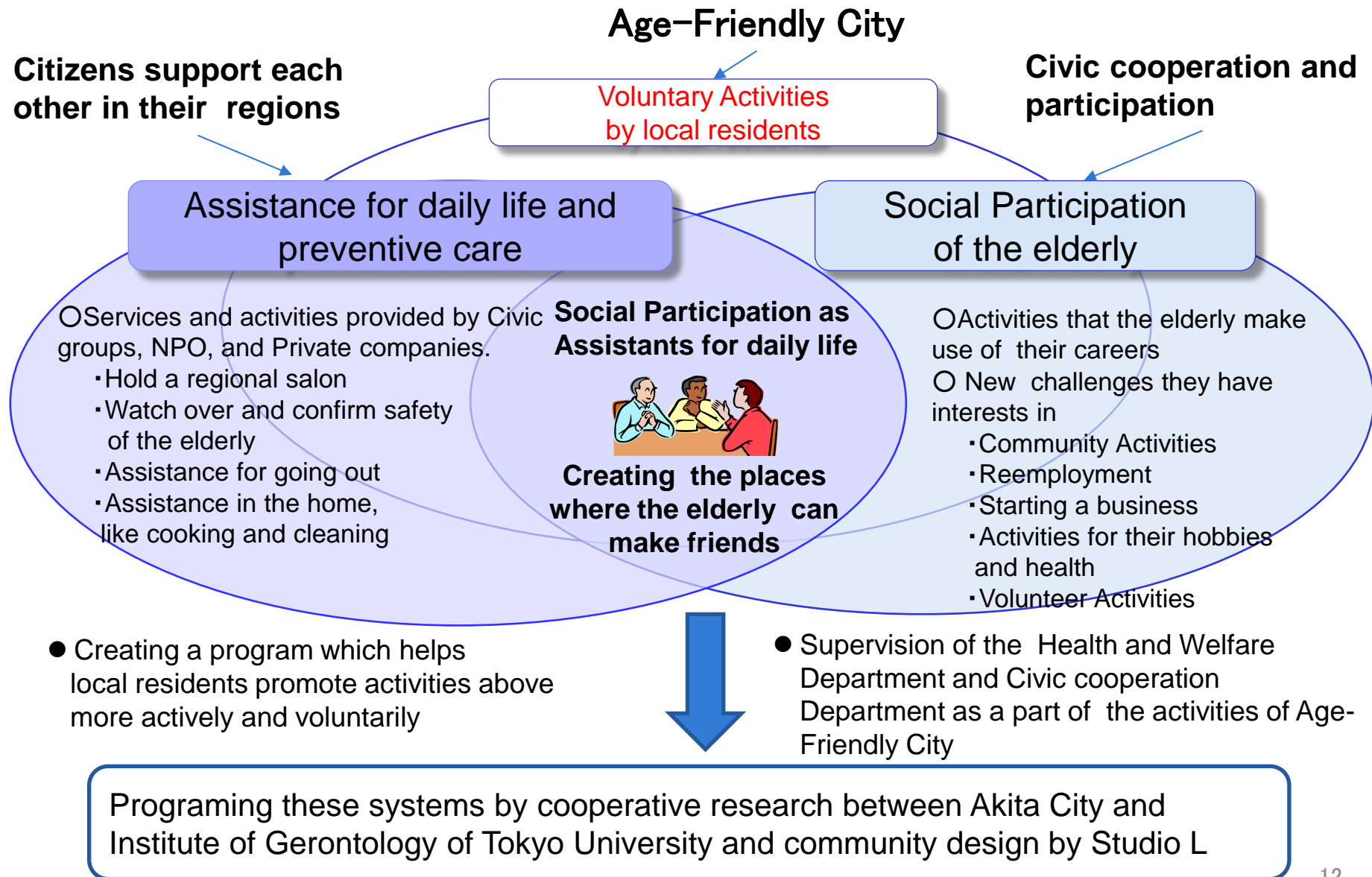


An Age-Friendly Partner Certificate



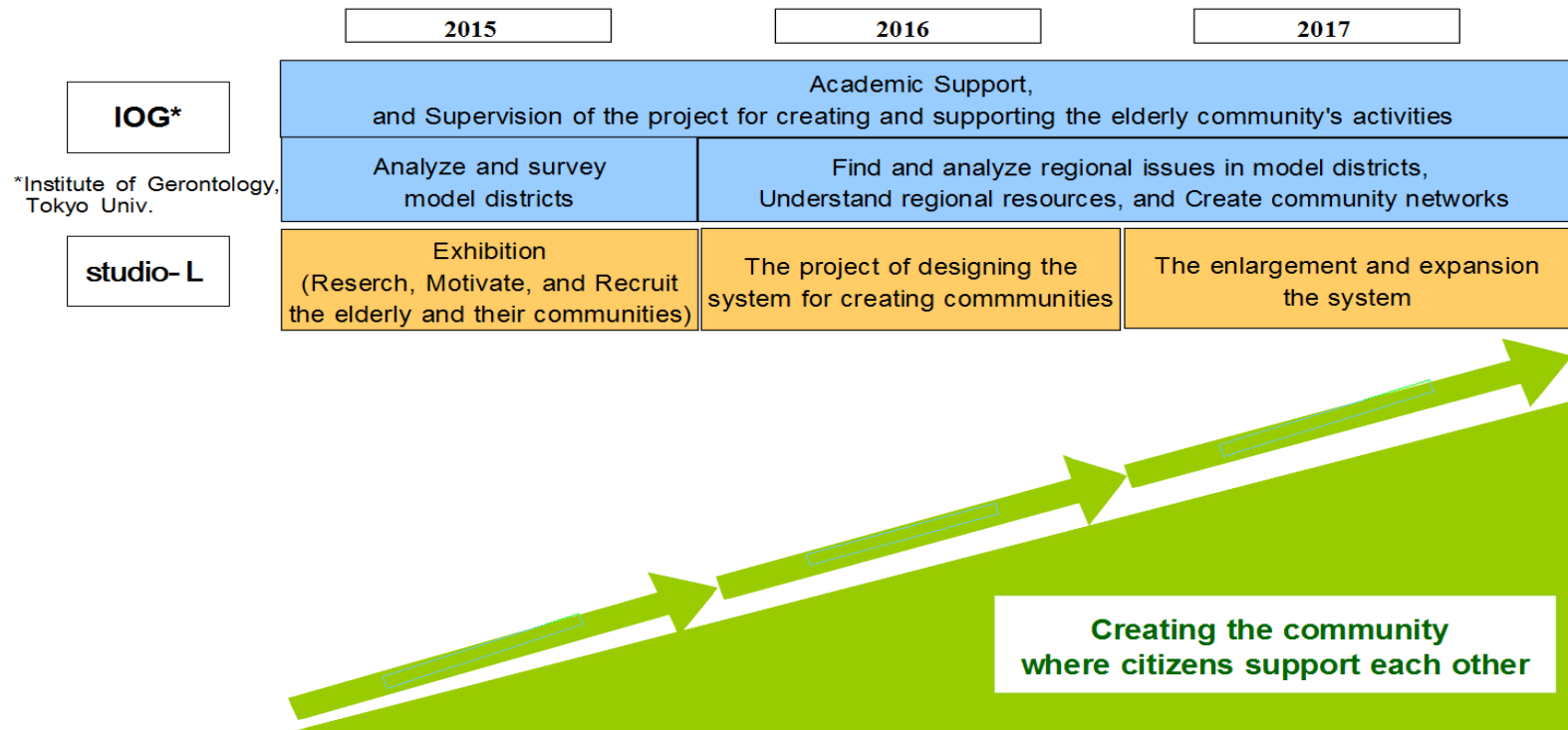
A Sticker

# Concrete Efforts 4 The Project of creating and supporting the elderly communities' activities



# The Process of community building

## The Structure of the Project for creating and supporting the elderly community's activities





# The Process of community building

## ■ Community Design by Studio L

Exhibited the results of the elderly survey at an exhibition,  
“Age 2240 style – Wiser people who take advantage of their time”

「長く生きる」とは、  
どういふことなのだろう

Life can be fun

2240歳  
スタイル

時間を味方にする人生の先輩たち

2016/03/09(土)~03/21(日) 秋田県立美術館  
1F 相模ギャラリー

開催時間 10:00~18:00(入館は17:30まで) 最終日のみ14:30まで 休館日 金曜休館 入館料 無料  
主催 秋田県 協力 株式会社 See Vision / 秋田県福祉会 / 秋田県立美術館 / 秋田県立大学 / JA秋田県連合会 / JA秋田県連合会  
(一財)ライフプランニングセンター「新老人の会」/ 社会福祉法人長岡福祉協会高齢者センター「こしえ」/ BABAラボ / Haywood, Middleton & Rochoy / 2016  
ホームホスピタリティ / Maggie's / 南地区生活協同組合 総合病院 南生協病院



# The Process of community building

■ **Held a seminar at the opening of the exhibition**





# The Process of community building

**■ The Institute of Gerontology of Tokyo University assessed communities and shared issues facing those communities in some model districts.**



## 御所野地区コミュニティデータシート

御所野地区

【基礎データ】

地区

●仁井田地区、御所野地区、御所野地区、四ツ小屋地区から構成されている。

人口

世帯

人口

		実数(人)					構成比(%)				
地区	H26年	総人口	0～14歳	15～64歳	65～74歳	75歳以上	0～14歳	15～64歳	65～74歳	75歳以上	
	H42年	30,745	1,795	8,581	3,727	3,157	5.8%	27.9%	12.1%	10.3%	
(参考)全市(H42)		259,483	23,679	140,777	38,406	56,621	9.1%	54.3%	14.8%	21.8%	
増減率(H25→42)		-100.0%	-100.0%	-100.0%	-100.0%	-100.0%					

世帯

		実数(世帯)				構成比(%)			
地区	H22年	世帯総数	単独世帯	核家族世帯	その他の世帯	単独世帯	核家族世帯	その他の世帯	
	H42年	11,127	2,139	7,556	1,432	19.2%	67.9%	12.9%	
(参考)全市(H42)		113,640	33,805			29.7%	0.0%	0.0%	
増減率(H25→45)		-100.0%	-100.0%	-100.0%	-100.0%				

主な公共施設

施設区分	箇所	名称・内訳
学校	8	小学校:4、中学校:2、高等学校:2
保育園・幼稚園	10	幼稚園(認定子ども園):4、 保育園(認可保育園、小規模保育施設、認可外):6
コミュニティ	1	大住地区コミュニティセンター
医療関連	16	診療所:15、病院1
介護関連	4	地域包括:1、在宅介護支援センター:1、特養:1、訪問看護:1
公園	13	公園面積 m <sup>2</sup>

支援対象者に関するデータ

第1号被保険者数(平成27年10月末) 7,333人

要支援・要介護認定者数 (平成27年10月末)	1,415人(自立判定を除く) 要支援1:315人 要介護3:119人 要支援2:218人 要介護4:226人 要介護1:204人 要介護5:189人 要介護2:144人 【認知症高齢者数(Ⅱ以上) ○○○○人】
主要介護保険サービス利用者数 (27年10月末)	居宅(介護予防)サービス受給者数: 予防221人、介護618人 地域密着型(介護予防)サービス受給者: 予防10人、介護58人 施設サービス受給者数: 166人
市町村サービス利用者数 (平成27年10月末)	配食サービス利用者 35人 緊急通報システム設置台数 116人
障害者数	身体障害者:○○○○、知的障害者:○○○○、精神障害者:○○○○
子ども数	未就学児:○、保育園児:○、学童保育利用者:○
福祉サービス利用者	生活保護世帯:○、要援護者名簿登録者:○

コミュニティの核組織に関するデータ／キーパーソン

自治会・町内会数	79	町内会会員数(全会員数/在住会員数)	
PTA数	4小学校/2中学校	民生・児童委員会 保健推進員	46/102
老人クラブ会員数	562人/14クラブ	NPO法人・任意団体数	9



# Future Plan

## Establish the 2<sup>nd</sup> Akita Age-Friendly City Action Plan in 2016

- Integrating Government, private companies, groups and individuals into one community, and establishing and activating a system for developing efforts of Age-Friendly City
- Building the elderly community by developing their activities

