

Addressing Inequalities of Seniors Older LGBTQI2S People

Do the
best
YOU CAN

UNTIL

you know
better.

THEN

WHEN YOU
know better,
do better.

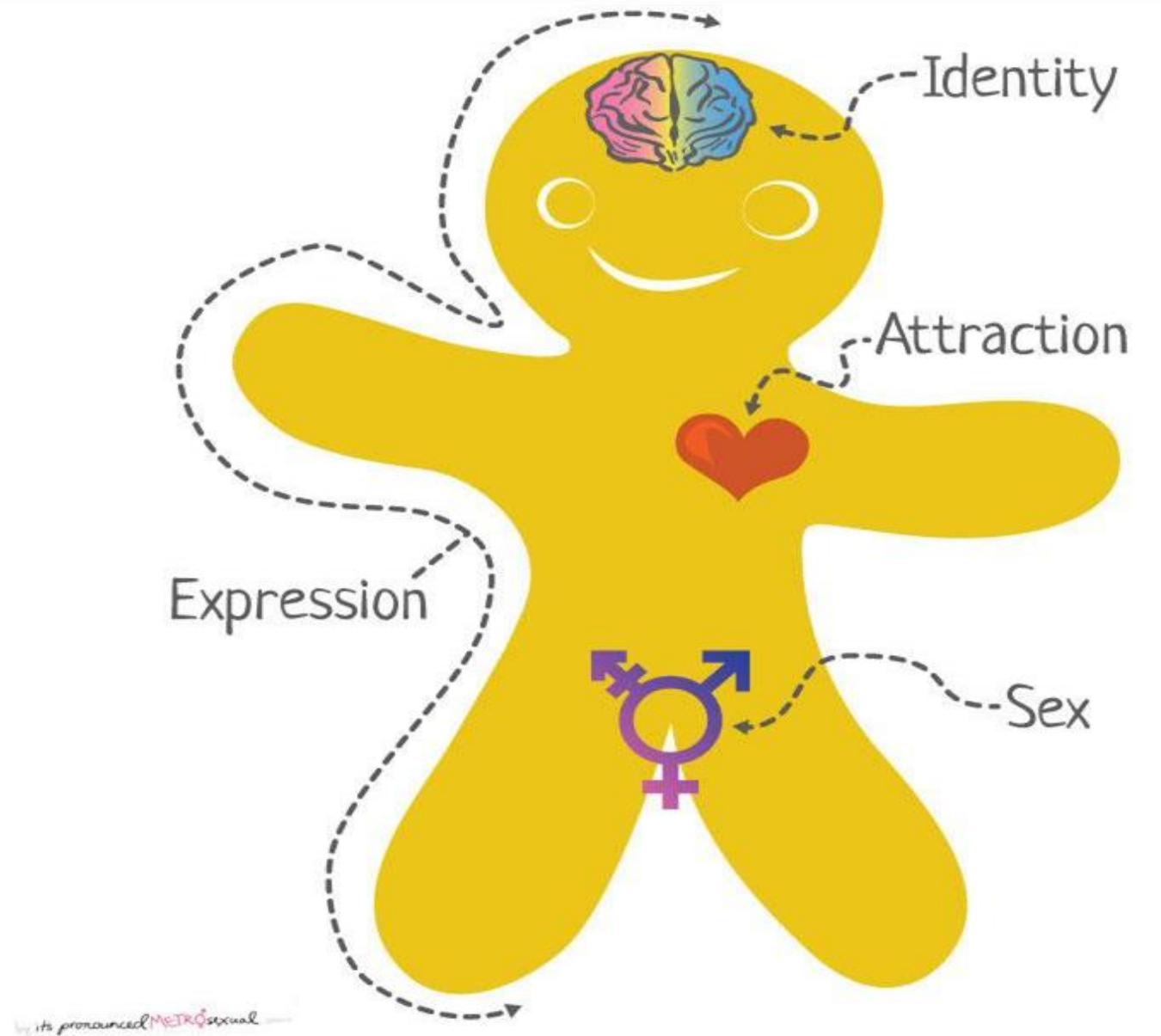


Maya Angelou

LGBTQI2S

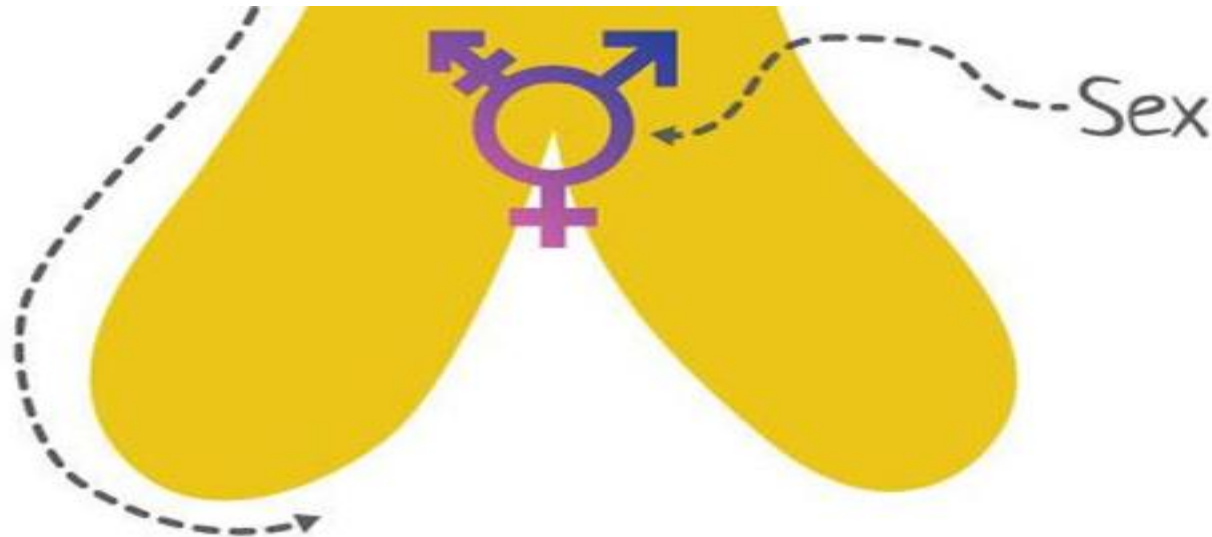
L	Lesbian
G	Gay
B	Bisexual
T	Trans
Q	Queer/Questioning
I	Intersex
2S	Two-Spirit

The Genderbread Person



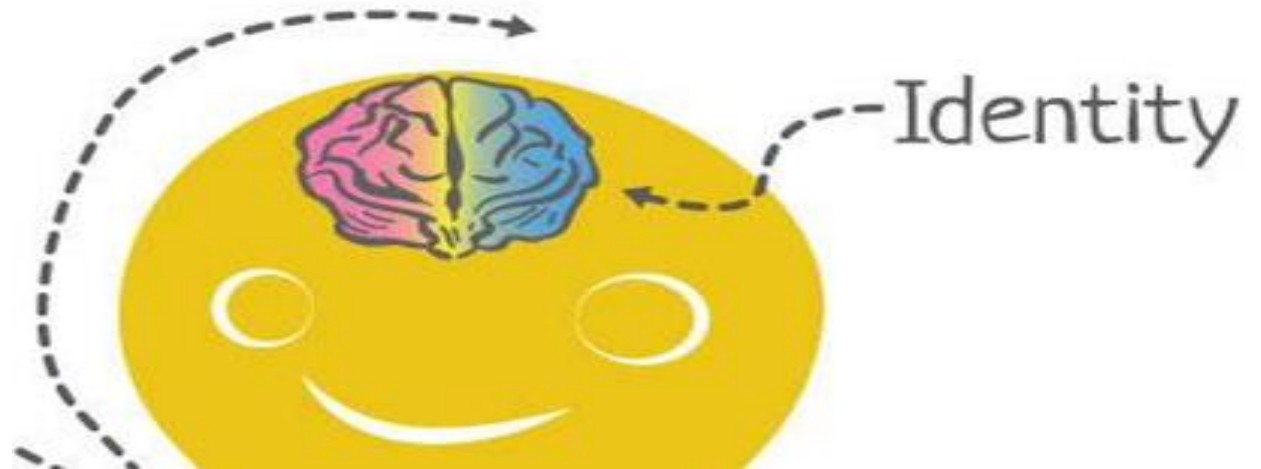
Sex/Assigned Sex

The category of male, female or intersex a person is assigned at birth based on biological characteristics (e.g.: external genitals, chromosomes, hormones etc.)



Gender Identity

A person's innermost sense of their own gender. This can include man, woman, both, neither or something else entirely. Gender also refers to a variety of social and behavioural characteristics (E.g. appearance, mannerisms). There are lots of words people may use to talk about their gender identity.



Gender expression

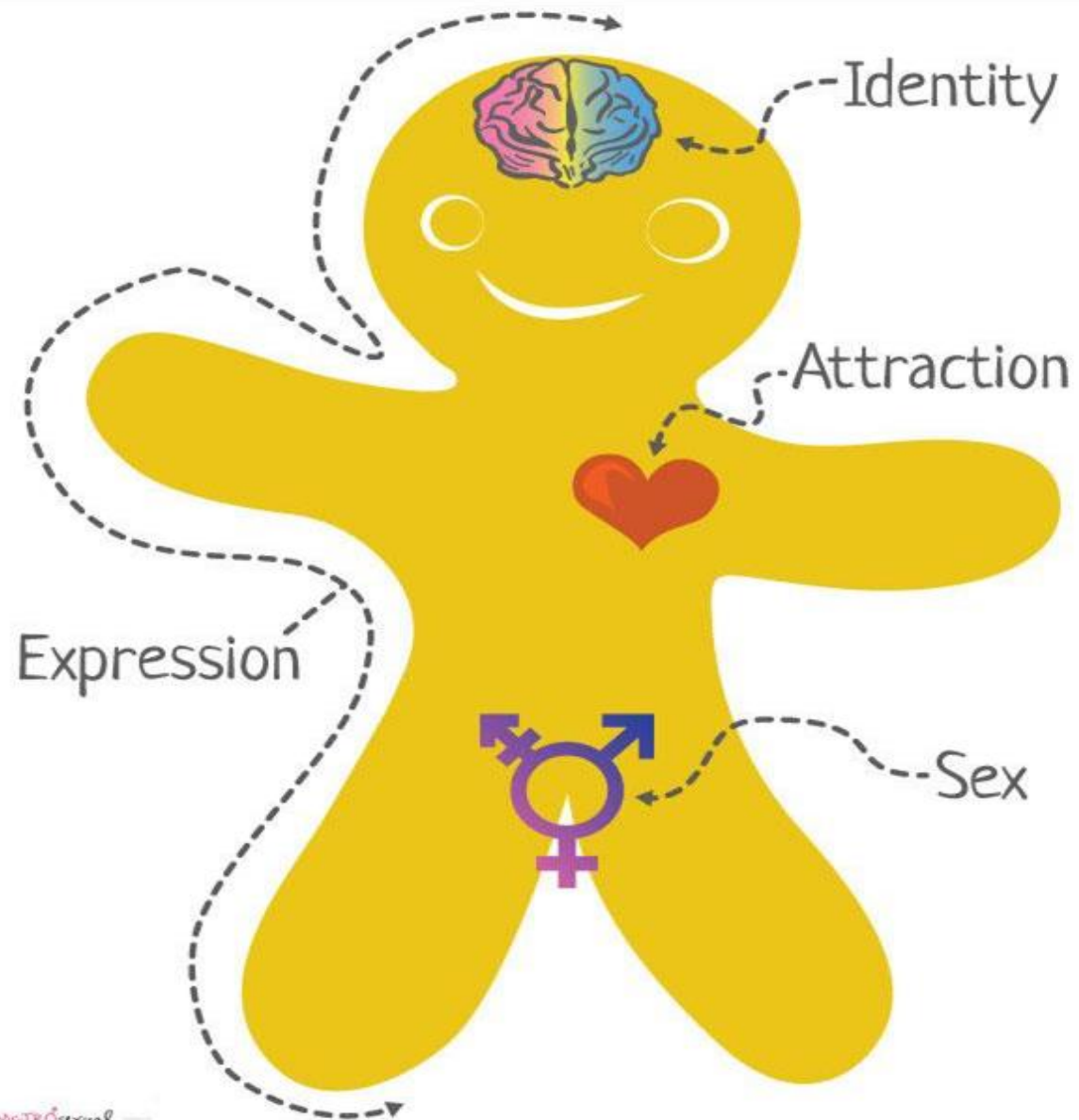
The way an individual communicates their gender identity to others. This is done through behaviour, body-language, voice, emphasis or de-emphasis of bodily characteristics, choice of clothing, hairstyle and wearing make-up and/or accessories. The traits and behaviours associated with masculinity and femininity are culturally specific and change over time.



Attraction (Sexual Orientation)

The emotional, romantic and physical attraction to, and intimate and/or sexual relations with, individuals of a particular sex and/or gender.



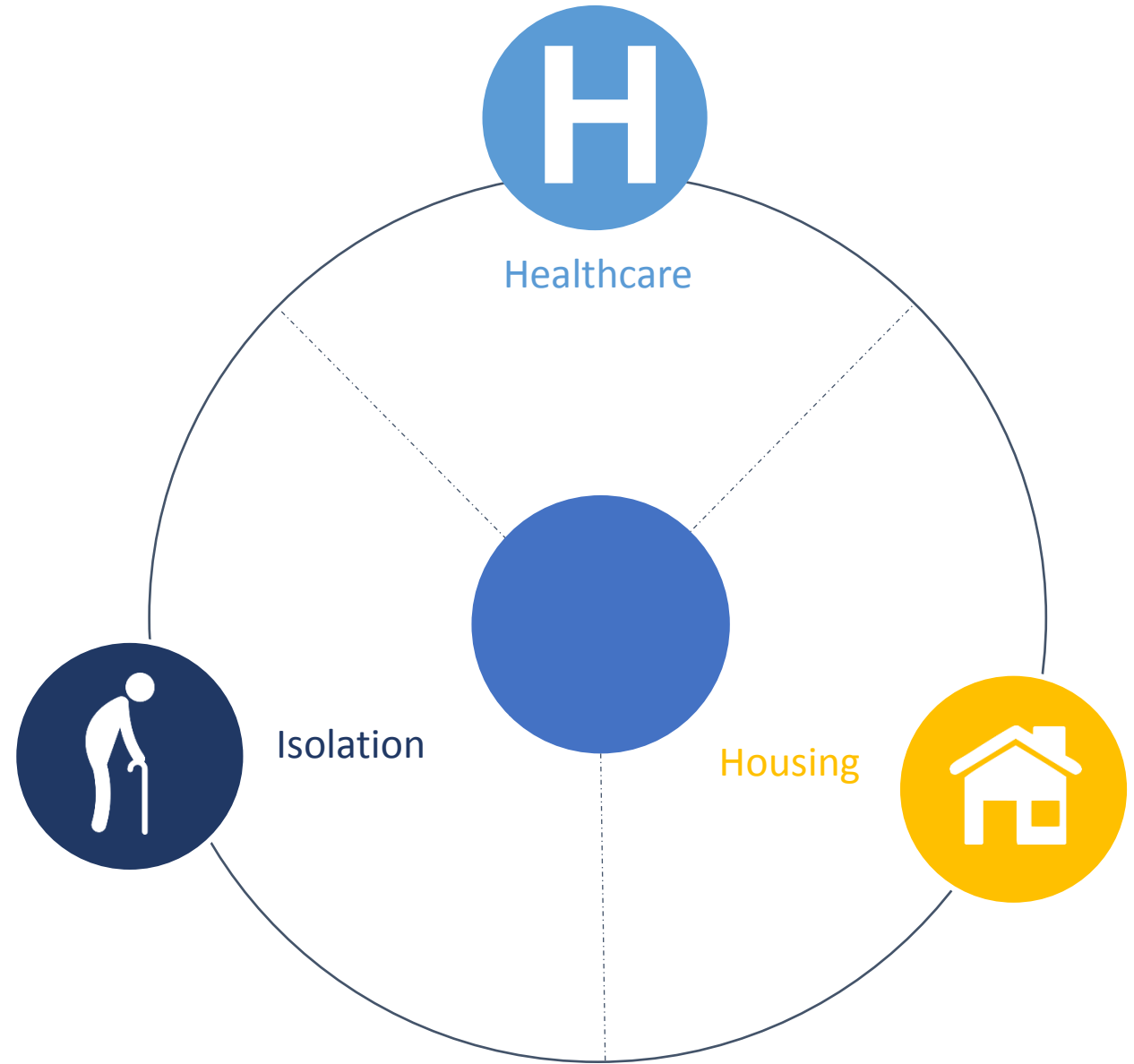


by its pronounced **METR**osexual

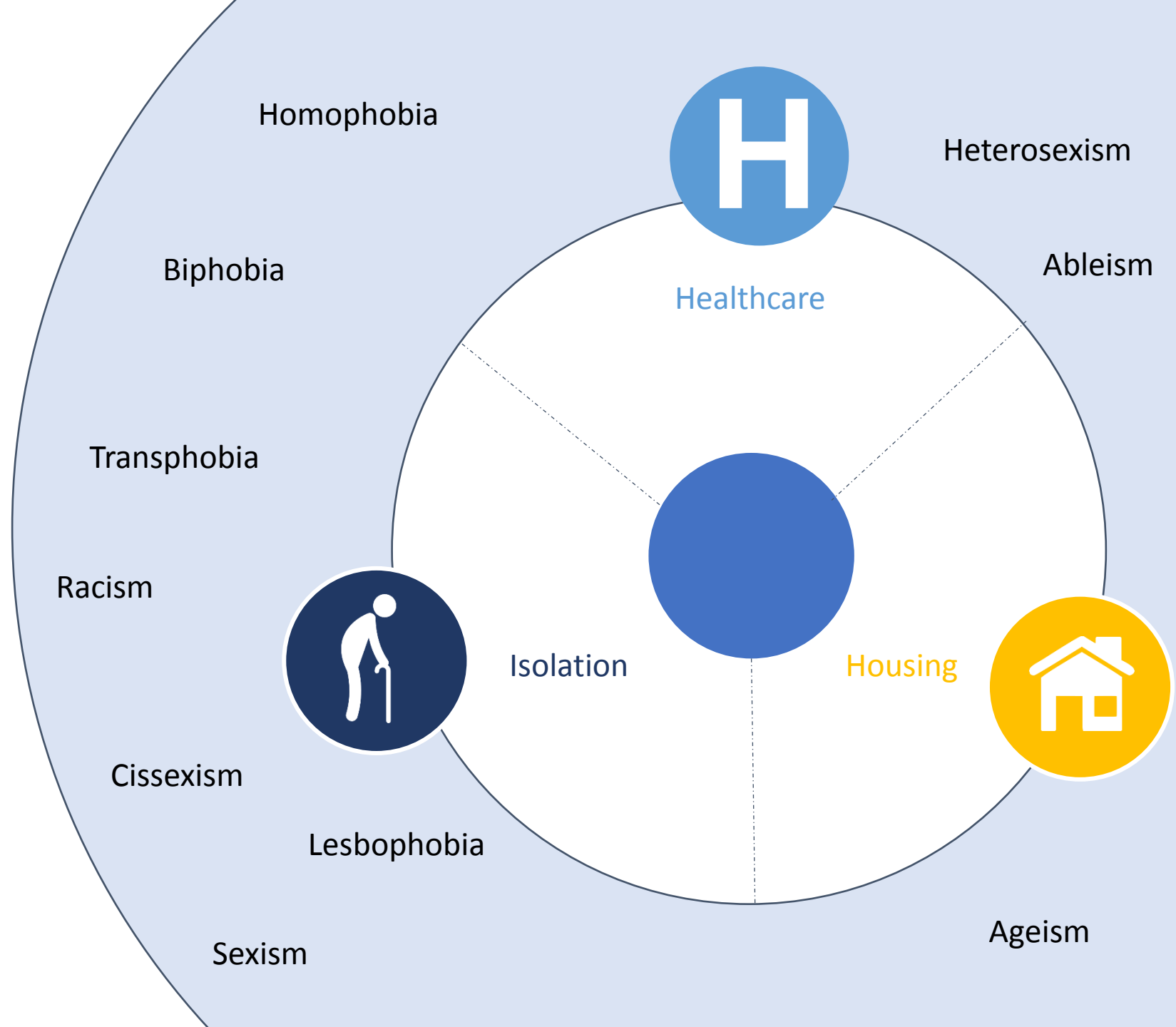
We've all got a lot going on!



Aging is Universal



There are particular challenges for LGBTQI2S Seniors



Panelists

LeZlie Lee Kam

Co-Chair, National Seniors Advisory Council
Egale Canada Human Rights Trust
trinicariblmk@rogers.ca



Karla Isabel Acuña Salas

Centro de investigación y Promoción para
America Central de Derechos Humanos



Michael Adams

Chief Executive Officer
Services and Advocacy for Gay, Lesbian,
Bisexual, and Transgender Elders (SAGE)



Situation of LGBTI Seniors in Costa Rica, El Salvador y Panamá.

CENTRO DE INVESTIGACIÓN Y PROMOCIÓN PARA AMÉRICA CENTRAL DE
DERECHOS HUMANOS.

LICDA. KARLA ISABEL ACUÑA SALAS.

Research

“Situación de la Población Adulta Mayor LGBT en Costa Rica el Salvador y Panamá” (2015).

First research developed in our countries.

In this research we..

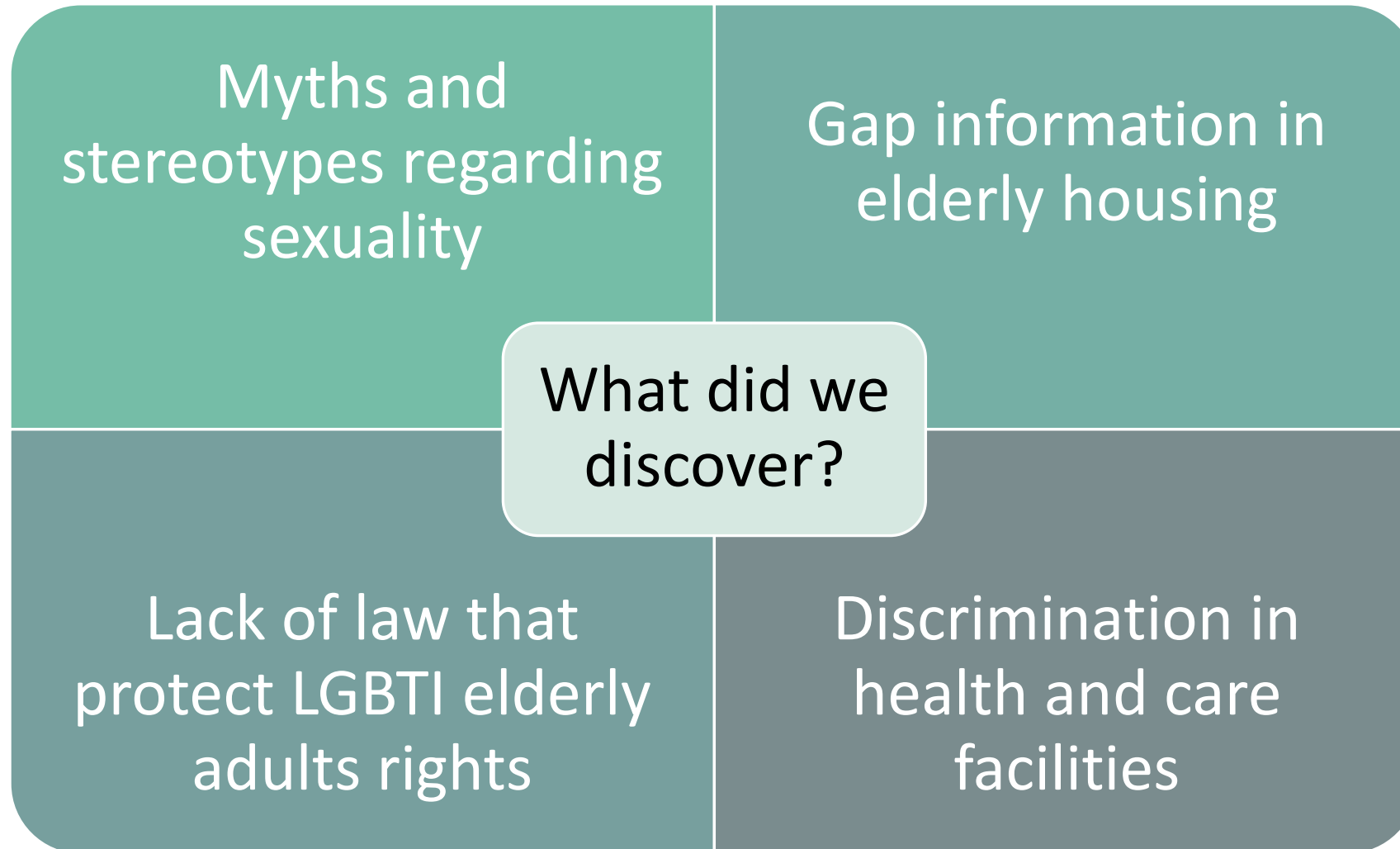
Identified concerns and needs regarding the healthcare and housing of LGBTI Seniors, and the barriers they face to reach those services

For that porpouse we...

Analyzed the legal framework of elderly adults in those 3 countries.

Interviewed elderly care facilities directors

Interviewed LGBTI Seniors



Common particular challenges for LGBTI Seniors

- “Invisibility” of the LGBTI Seniors and heterosexism.
- Lack of understanding of the LGBTI Seniors specific needs.
- Isolation.
- Insufficient knowledge at senior living facilities and differential treatment (as compared to heterosexual people).
- Lack of legal protection.



¿WHAT ARE WE DOING NOW?

¿WHAT ARE THE CHALLENGES?

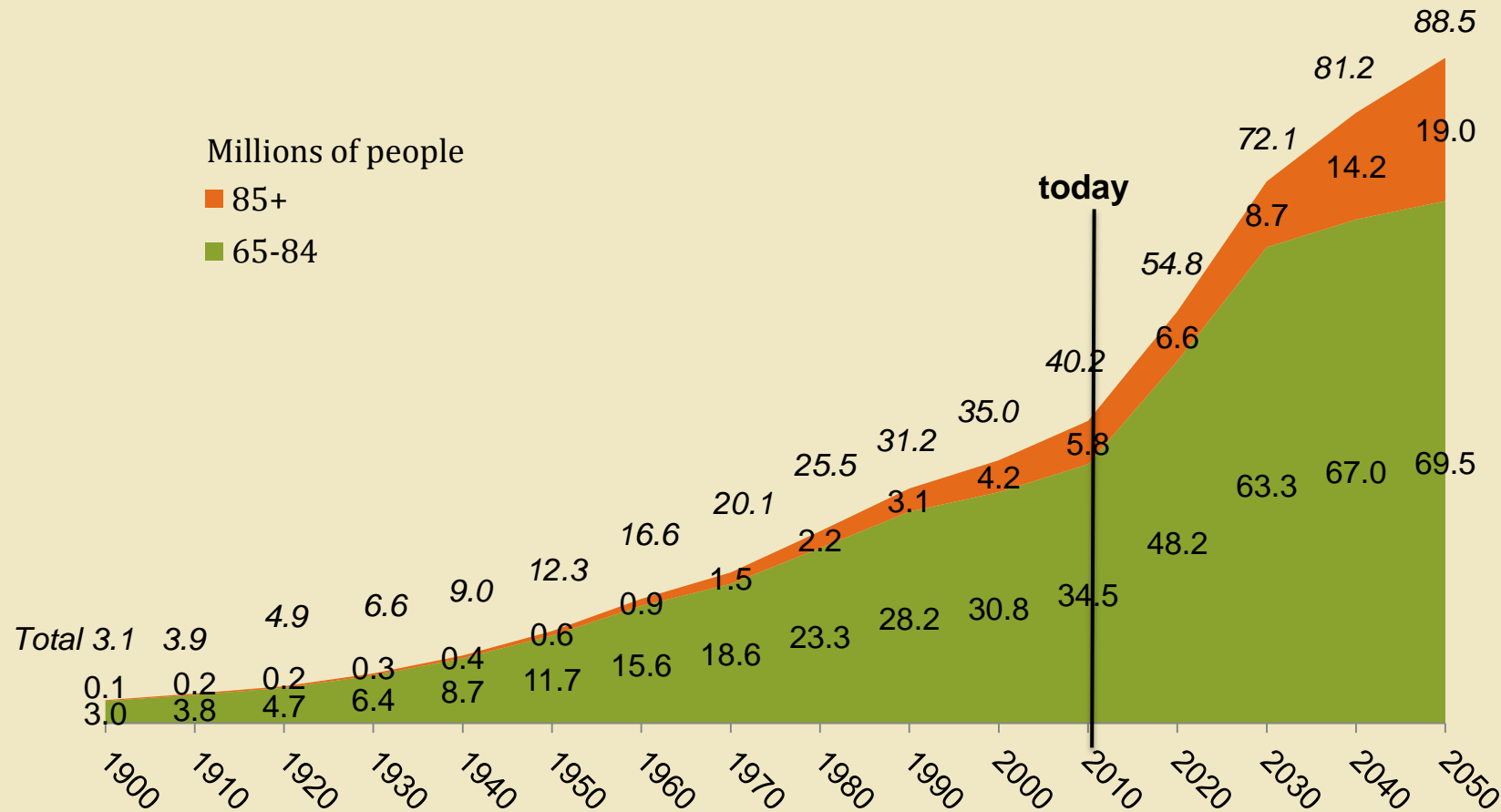
LGBT Older Adults in the United States

Addressing Inequalities – Older LGBTQI2S
March 28, 2017

Michael Adams
Chief Executive Officer, SAGE



U.S. Society is Aging Rapidly

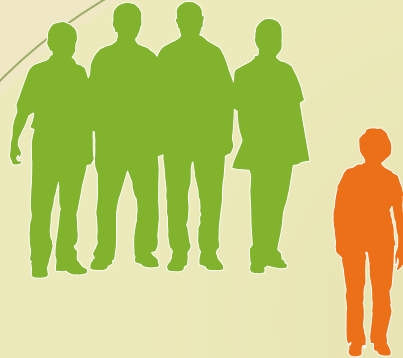


Source: U.S. Census Bureau, 2008

U.S LGBT Elders Face Unique Challenges to Successful Aging

1. Cumulative effects of a lifetime discrimination – poverty – health disparities

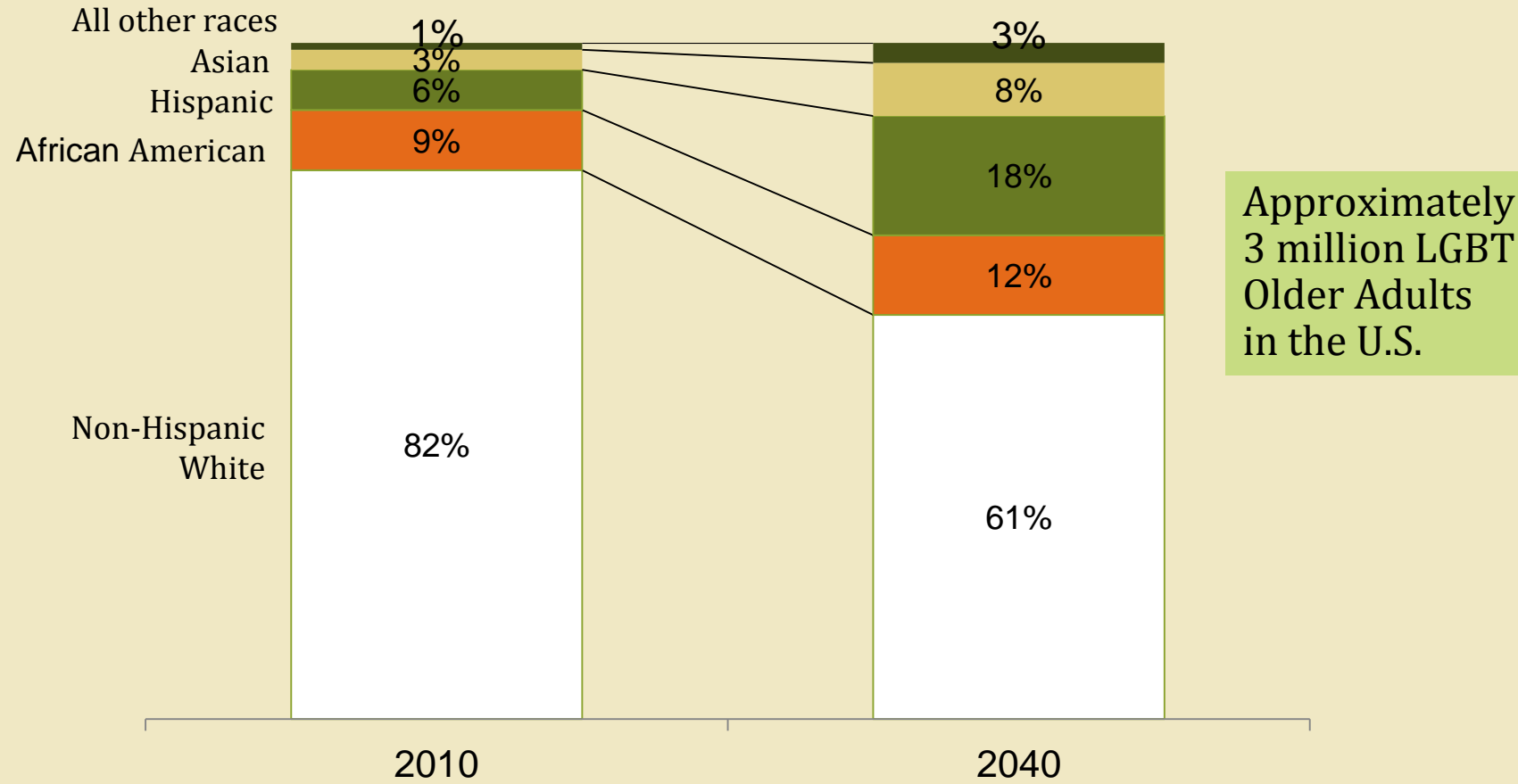
2. Social isolation & thin support networks



3. Unequal treatment under laws and programs for older adults



In the Future, U.S. Adults Age 65+ Will Be Far More Diverse



Source: Federal Interagency Forum on Aging Related Statistics. US Census bureau; MAP analysis

Services and Advocacy for GLBT Elders (SAGE)

- Founded in 1978
- Many first-time U.S. programs - “friendly visiting”, HIV support groups, LGBT-friendly senior centers, caregiver support, housing
- SAGE Center, 1st LGBT Senior Center in the U.S., opened in New York City in 2012
- National Resource Center on LGBT Aging – Partnership with U.S. Government to provide training and technical assistance
- SAGENet – 30 affiliates in 20 states
- Federal, state & local policy advocacy
- Intersectional – Diverse Elders Coalition
- Major advances at White House Conference on Aging 2015
- Partnership formed with Int’l Federation on Ageing in 2016

Michael Adams

Chief Executive Officer

SAGE
305 Seventh Ave.
15th Floor
New York, NY 10001
U.S.A

+1-212-741-2247
madams@sageusa.org
www.sageusa.org



Some Takeaways

- Older LGBTQI2S people exist, but are often invisibilized. Because of this, they face additional challenges in comparison to non-LGBTQI2S people and are often overlooked in broad-based population studies.
- There are a lack of equitable laws and policies in place that protect older LGBTQI2S people's rights and promote their choices and freedom. However, every context looks different.
- As the aging population diversifies, so must the response to their care. Older LGBTQI2S people require policies that are equitable, culturally-appropriate, context-specific and cater to their intersecting needs.

For more information on future webinars on
Older LGBTQI2S people, contact:

Iradele Plante

iplante@egale.ca
egale.ca

OR

Virginia Duarte Walsh

**vduartewalsh@ifa-
fiv.org**

ifa-fiv.org

Patrick Aitcheson

paitcheson@sageusa.org

sageusa.org