

# GLOBAL PERSPECTIVES: MOBILIZING ADVOCACY INITIATIVES FOR OLDER LGBTQI PERSONS



International  
Federation on  
Ageing

sage

Advocacy &  
Services for  
LGBT Elders

We refuse to be invisible®

Egale



# Webinar 2020

Serena Worthington  
Director of U.S and Global  
Collaborations, SAGE, USA

---

Moderator

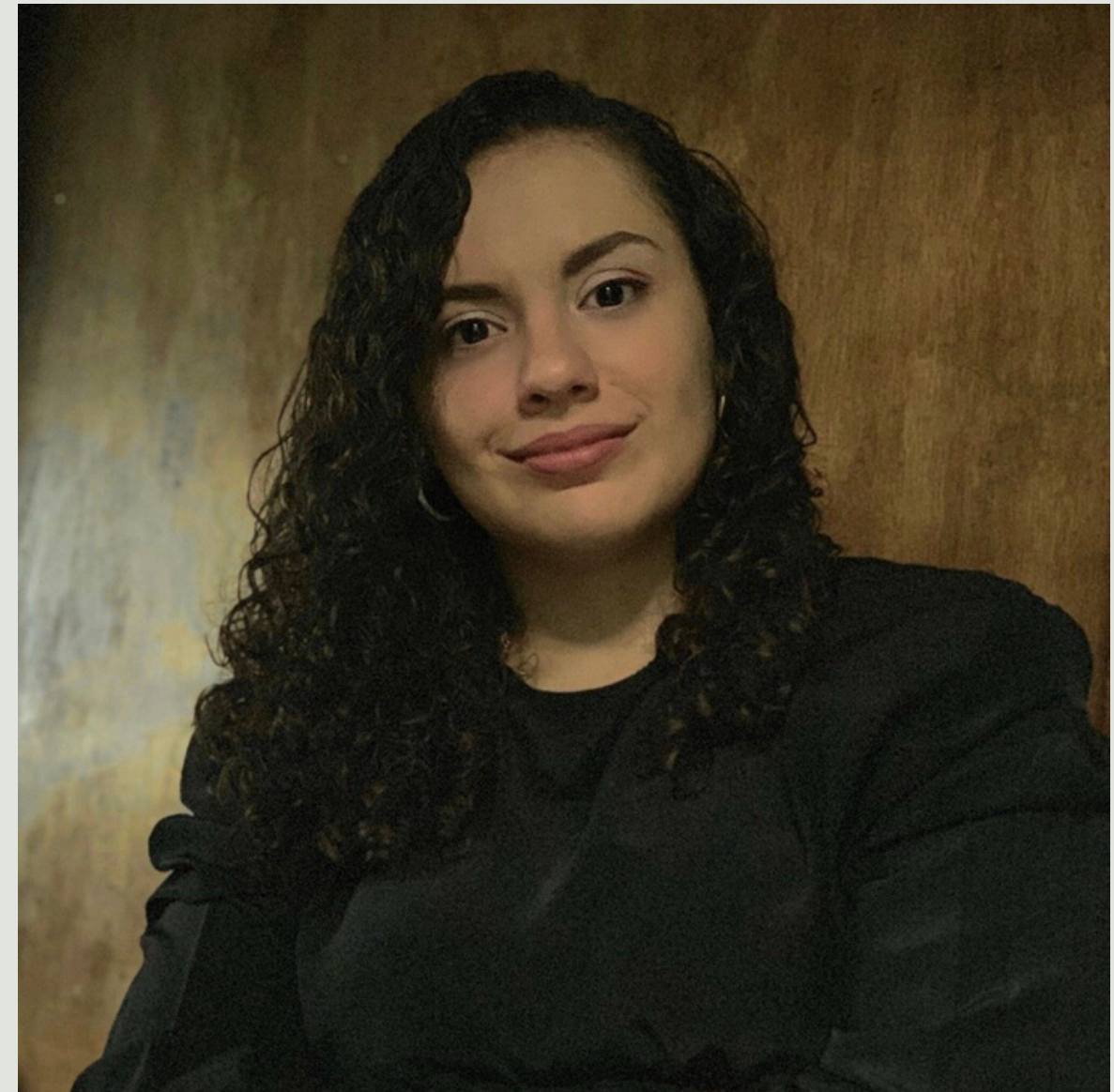


# Webinar 2020

**Daniela Bolaños Torres**  
Coordinator of Policy Advocacy  
Unit, CIPAC, Costa Rica

---

## Panelist





## ADVOCACY FOR OLDER LGBT ADULTS

WHAT IS CIPAC (COSTA RICA) DOING?



# 21 YEARS



**AGAINST SEXUAL  
ORIENTATION AND  
GENDER IDENTITY  
AND EXPRESSION  
DISCRIMINATION**

## WHAT WE DO

- POLITICAL ADVOCACY
- SOCIAL INVESTIGATION
- HUMAN RIGHTS PROMOTION

# WHY OLDER LGBT ADULTS?

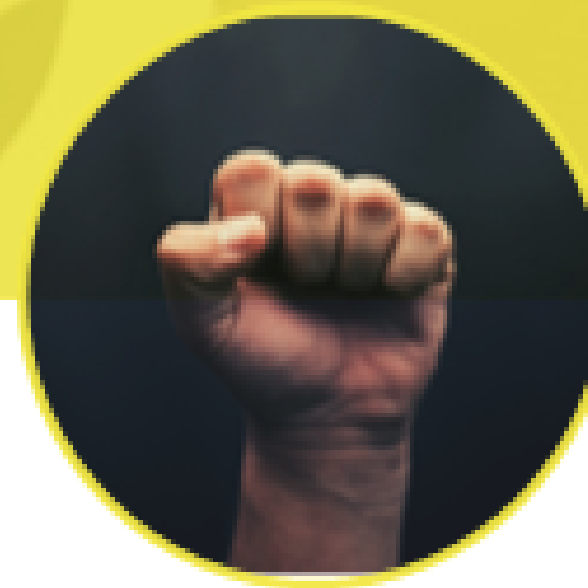
MAKING VISIBLES THE MORE INVISIBLES ONES



**AGING**



**SEXUALITIES**



**RIGHTS**



# INTEGRAL HUMAN DIGNITY APPROACH



POLITICAL ADVOCACY

**The cockroach strategy**





**WHEN YOU ARE NOT  
ALONE DOING ADVOCACY**



# CHALLENGES

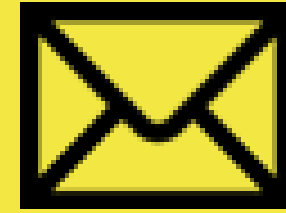
- Access to information and data.
- Bureaucracy.
- Resources and sustainability.
- Prioritization of topics on the agendas.
- To build good and strong networks or alliances.
- Processes for adaption according to context needs.

## COVID-19

- Human concerns vs relevance of advocacy's topics.
- Technological adaptation and its inequalities.
- Adaptation of advocacy strategies during a pandemic.
- Justify the continuity of the NGO's projects.



# Web sites



## EMAIL

***[cipacdejecutiva@gmail.com](mailto:cipacdejecutiva@gmail.com)***  
***[aaam.lgbt@gmail.com](mailto:aaam.lgbt@gmail.com)***



## WEBSITE

***[cipacdh.org](http://cipacdh.org)***



## SOCIAL MEDIA

***[Cipac-derechos](#)***  
***[Alianza Americana PAM LGBT](#)***

# Webinar 2020

Jeffrey Walimbwa

Project Manager, Ishtar MSM, Kenya

## Panelist







# **GLOBAL PERSPECTIVES ON EFFECTIVE OLDER LGBTQI ADVOCACY STRATEGIES**

Presented by: Jeffrey Walimbwa Wambaya  
Program Manger  
Ishtar

# Introduction:

Lesbian, gay, bisexual, transgender, and queer (LGBTQ) older adults, face significant challenges. LGBTQ older adults are disproportionately more likely to live alone than heterosexual seniors and are at a much higher risk for disability, poverty, homelessness, social isolation, depression, alcohol dependence, financial disparity, housing deficiencies and premature institutionalization. LGBTQ older adults are often childless or estranged from family members, setting up a scenario where older adults are the sole support of other older adults



# More findings

- There is an almost complete **limited research** on the lives of lesbian, gay, bisexual, and transgender (LGBT) adults in Africa.
- Given high levels of criminalization and inequality, Strong themes of inclusion and belonging despite the **structural challenges** faced by many LGBT in Africa impacts in quality of life as they age.
- Narratives of **marginalization/exclusion** and in comparison with reports of **belonging and inclusion** in families, communities, friendship networks, and in health care needs to be documented to **understand the gaps** in programming for LGBT Adults.
- Some findings indicate that, while experiences of homophobia and transphobia are real among LGBT elders in Africa, they experience challenges in agency, support, and relatively high reported levels of **social exclusion** as they age.

# Questions:

- At what point to we consider aging amongst LGBT adults ( Region, race, cultures, employment, education, funerals etc)
- What are the coping mechanisms of ageing ( support, economic etc)
- What services do we need to offer LGBT adults ( accessible, availability and affordability)
- Aging with disability or pre existing conditions

Research Q: **Understanding the quality of life amongst Older LGBT adults in Kenya**



# How do we do it!

Not many countries in Africa **do not** have interventions for older gay men. Research rarely, if ever, considers the specific **lived experiences of LGBT elders** and instead foregrounds the lives of **younger LGBT people**. We therefore need to **explicitly document the lived experiences of aging of older LGBT identified people**.

Most programs are youth centered and older adults left to reintegrate back to society or accept societal norms (**Going Back to the Closet**)

LGBT elders who face discrimination within the very **systems** and **organizations** designed to support them as they age.

## Questions:

At what age do we consider one is ageing within the community?

What programs do we need to have in order to address the issues/ Are there programs addressing Older LGBT adults

# Recommendations

- Have inclusive programs for LGBT adults
- Invest in research to understand the needs of LGBT adults
- Encourage donors and funders to support programming for LGBT adults
- Have employment programs for LGBT adults and support systems.

# Acknowledgement

**SAGE**

**Ishtar**

**GALCK**

**INEND**

Thank You!

A village without the elderly is like a  
well without water.



# Webinar 2020

Michael Adams  
CEO, SAGE, USA

## Panelist



# QUESTION & ANSWER PERIOD